

# CSRMS – SOCIAL DISTANCING PLAN

20-21 School year  
**SEMESTER 2 UPDATE**

WE WILL CONTINUE TO  
SOAR TO SUCCESS...

But we continue to need  
your help during the 2<sup>nd</sup>  
Semester to make this a  
reality for us all!



## OUR CONTINUING SOAR FOCUS...

**S**OCIALLY DISTANCING

**O**NE-WAY HALLWAYS

**A**PPLYING PROPER HYGIENE PRACTICES

**R**ESPECTING MASK WEARING

## **S**Ocially DISTANCING - BEFORE SCHOOL

- We ask that parents drop-off students in the loop **CLOSEST** to their assigned entry point and that **drop-off occurs between 7:10 A.M. and 7:20 A.M.** Last year, drop-off loops were assigned to students by grade level. That is **NOT** the case this year.
- Students who ride the bus are **REQUIRED** to wear a mask when boarding the Bus in the morning and during the entire ride to school. Please follow bus driver instructions in regards to seating on the bus.

# SOCIALLY DISTANCING - BEFORE SCHOOL

- At **7:10 A.M.**, the supervising staff member at each entry point will allow groups of students to enter the building depending on the floor of the students' first period class. The supervising staff members will remain at their assigned entry point until 7:25 A.M. Any students arriving after 7:25 A.M. should report to the front office entrance.
- **When students arrive they will be required to go directly to their first period classroom and will NOT be allowed to mingle/socialize with other students in the atrium or other common areas.**
- Each classroom teacher will allow students to enter their classroom immediately and will supervise the students until the start of class at 7:25 A.M.
- Breakfast is available for pick-up in the 1<sup>st</sup> Floor Atrium and can be accessed by students using any of the entry points. Once a student has received their breakfast, they are to proceed directly to their first period classroom and eat their breakfast in the classroom.

## **S**OCIALLY DISTANCING - BEFORE SCHOOL

- Students will enter the building through different entrances at **7:10 AM** or as soon as they arrive on campus (if after 7:10 AM)
- **Students are REQUIRED to use their assigned entry point** and to remain socially distanced as they wait to enter the school building prior to 7:10 AM.
- **Your entry point is determined by the location of your 1<sup>st</sup> period class not by how you arrive on campus!! Signs will be posted at each entry point**
- You are asked to Social Distance (6ft.) and are **REQUIRED** to wear a mask as you enter the building!!

<u>Ist Period Class</u>	<u>Assigned Entry Point #:</u>	<u>Ist Period Class</u>	<u>Assigned Entry Point #:</u>	<u>Ist Period Class</u>	<u>Assigned Entry Point #:</u>
Adkins	4	Grassick	12	Slaughter	Portable 13
Allen	15	Herlocker	6	Smith, D	12
Almadovar	6	Hilton	14	Smith, J	7
Arguelles	7	Hoose	5	Smith, S	6
Aursland, J	13	Hull	15	Steady	5
Aursland, K	1	Hyatt	12	Stelter	7
Bain	2 or 3	Iler	Portable 18	Swenson	5
Bell	Portable 14	Lee	5	Tekaia	14
Brockman	9	Livingston	12	Tzounakos	5
Cassels	4	Longa	12	Vandiver	12
Cook	10	Mandelberg	6	Wilson	8
Denig	6	Middleton, A	Portable 12	Yasurek	4
Doychak	14	Nobles	1	Zivcovic	12
Egan	5	Otero	1		
Ely	Portable 15	Ramos	5		
Engel	12	Rapaport	14		
Evans	5	Richardson	4		
Fields, T	5	Roth	5		
Fisher, L	Portable 16	Roush	12		
Fisher, R	Portable 19	Russo	7		
Flatley	2 or 3	Seurattan	15		
Foyt	14	Skaggs	1		

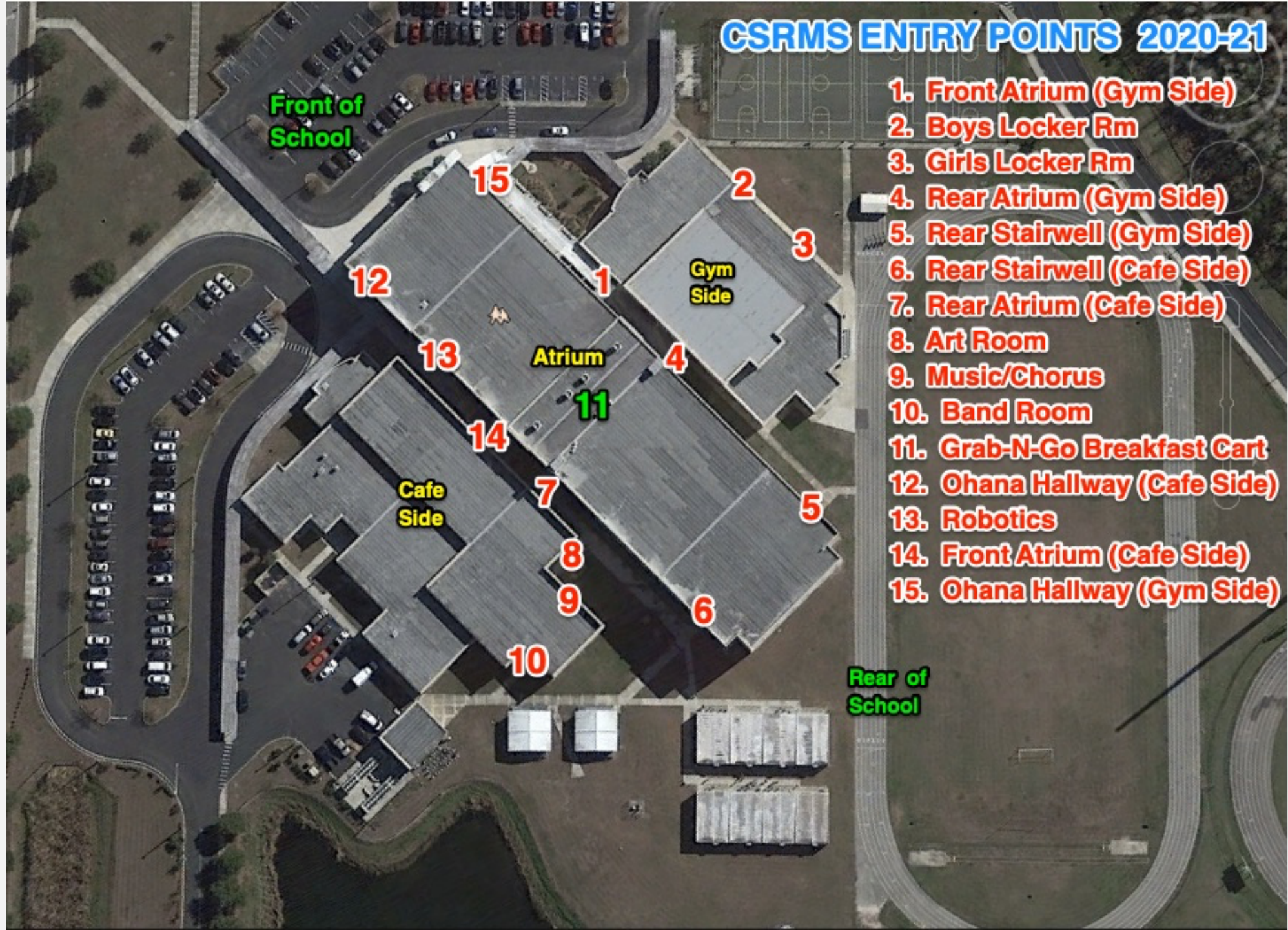
**Entry points will be posted on the Rushe website for all 1<sup>st</sup> period classes:**

Please use your schedule to identify the teacher that you have for 1<sup>st</sup> period and use the entry point chart to identify your entry point.

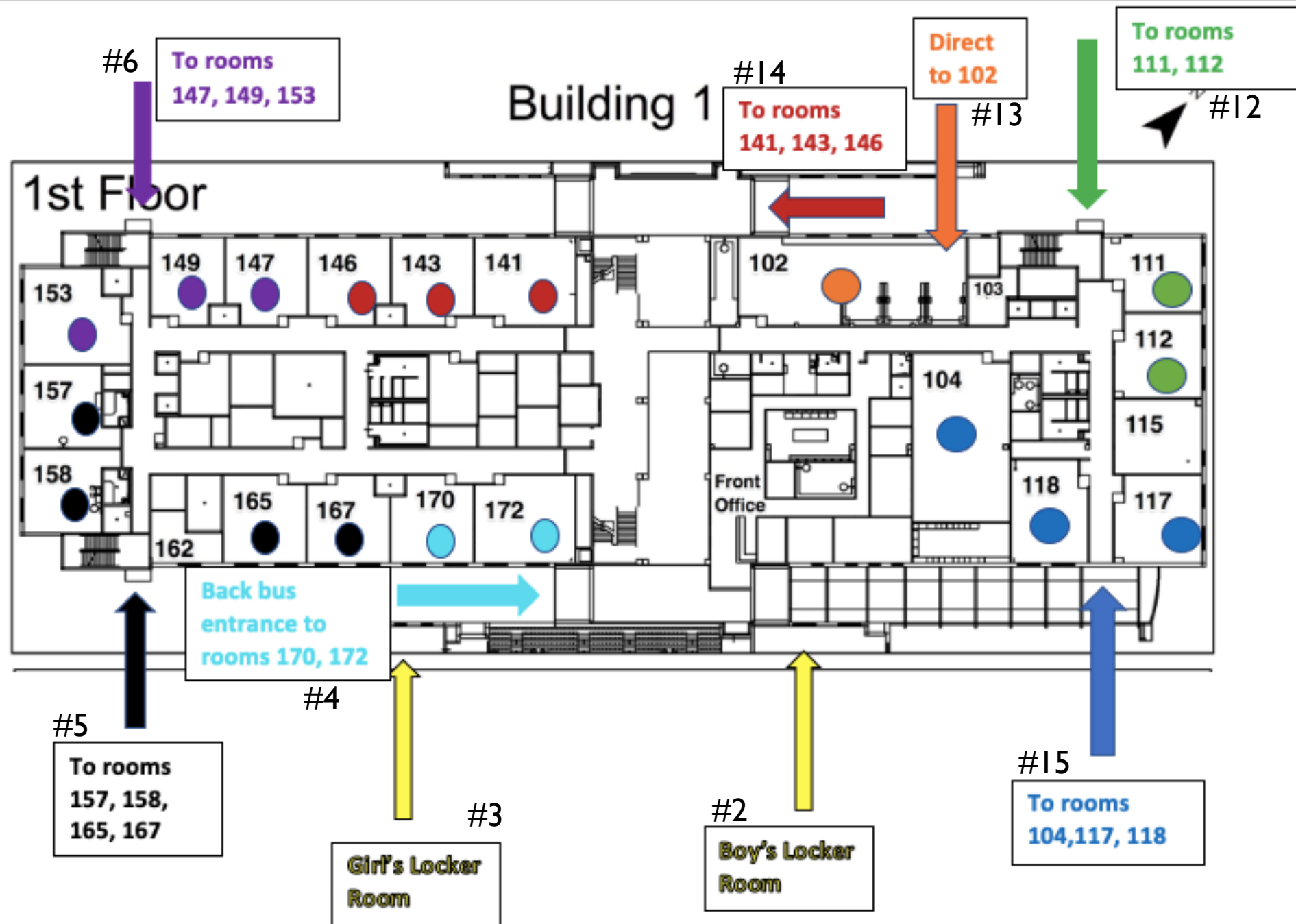
Signs will be posted at each entry point and a staff member will be present to guide students and check schedules to make sure that students are using the correct entry point.

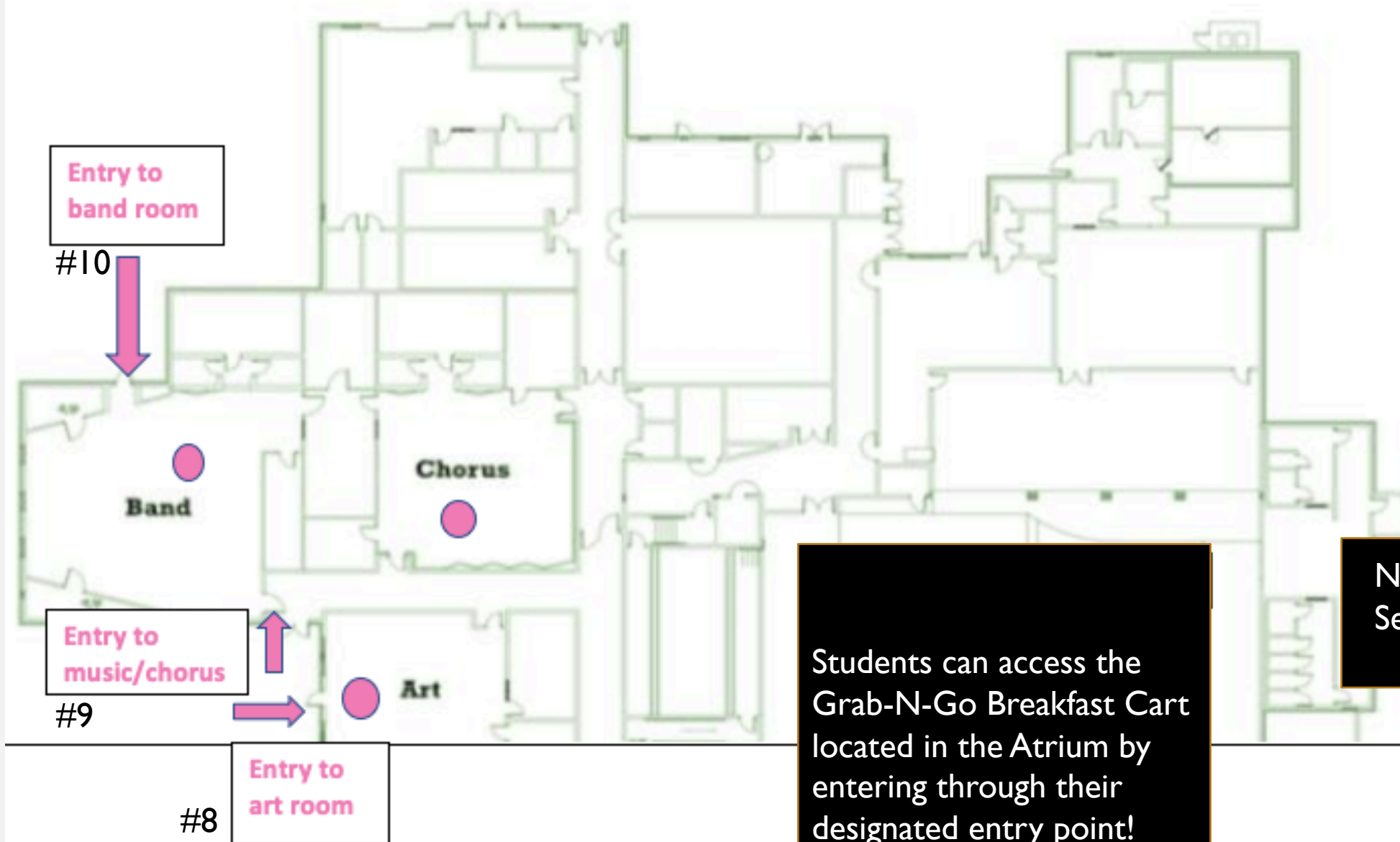


**Entry Point # 11** – will no longer be used. The Grab-N-Go Breakfast Cart has been moved to the 1<sup>st</sup> Floor Atrium. Students wishing to get breakfast can access the cart from their normal entry point!









Students can access the Grab-N-Go Breakfast Cart located in the Atrium by entering through their designated entry point!

No Entry For Semester 2

Up the back  
stairwell near  
portables to  
rooms 232, 230,  
227, 226

#6

To rooms 222, 224 from  
cafeteria-side atrium  
entrance and up stairwell  
on cafeteria side.

#14

Up the side  
stairwell to rooms  
201, 202, 203, 210

#12

2nd Floor



#5

Up the stairwell  
near track to  
rooms 237, 238,  
243, 245

#4

To rooms 252, 251 from  
gym-side atrium entrance  
(bus entrance) and up  
stairwell on gym side.

Rear atrium doors from portables, up stairwell on cafeteria side to rooms 318, 321, 322, 324, 332, 334

#7

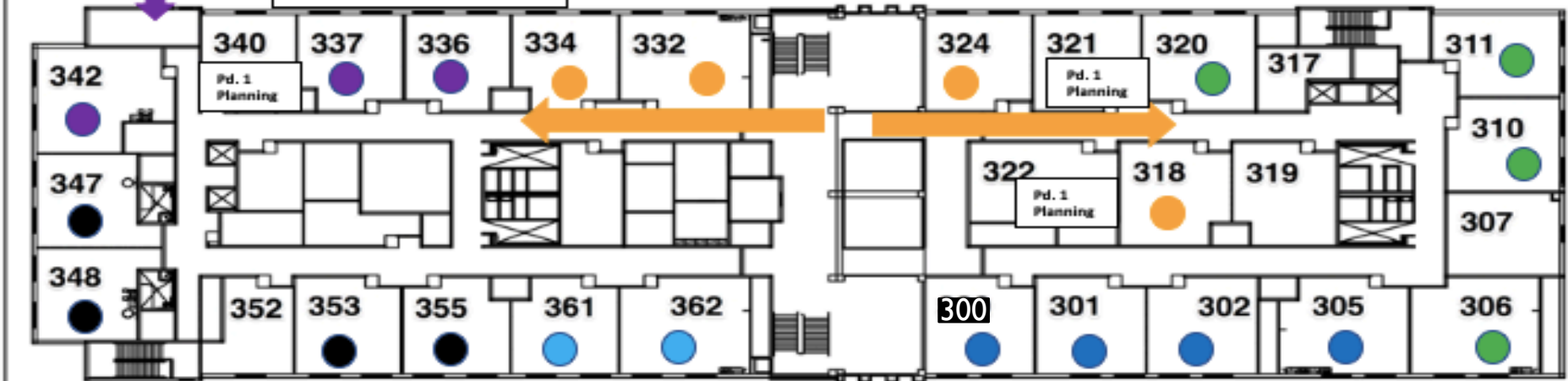
Up the side stairwell to rooms 306, 310, 311, 320

#12

Up the back stairwell near portables to rooms 336, 337, 342

#6

3rd Floor



#5

Up the stairwell near track to rooms 347, 348, 353, 355

#4

To rooms 361, 362 from gym-side atrium entrance (bus entrance) and up stairwell on gym side.

#1

Enter through double doors to the atrium near the gym and up the staircase near the gym to rooms 300, 301, 302, 305

# **S**OCIALLY DISTANCING – GRAB N GO BREAKFAST

- **Grab and Go Breakfast will be available between 7:10 A.M. and 7:20 A.M. in the 1<sup>st</sup> floor Atrium for those students who would like to get breakfast at the start of the school day.**
- Students who wish to purchase breakfast will enter through the assigned entry point for their first period class **after 7:10 A.M.** and can then go to the Atrium to access the Grab-N-Go Breakfast Cart. Once they have been given their breakfast items, students **are asked to report to their first period class immediately and are asked to eat their breakfast in the classroom!**
- **Students NOT eating breakfast are REQUIRED to** use the entry point assigned to their first period class and are to report directly to their first period class and NOT gather in the Atrium



## SOCIALLY DISTANCING - DURING LUNCH

- We will use our Cafeteria and PE Classroom for lunches, and we will space students out within those locations to the greatest extent possible.
- Students will be assigned to specific lunches by class period and the **expectation remains that students will sit with their classmates during lunch.**

## **S**OCIALLY DISTANCING - DURING LUNCH

- **Each class will have assigned table(s) in the cafeteria/PE Classroom** This is to help us keep cohorts together and will assist us with contact tracing if/when that is necessary.
- **Students will have assigned seats at lunch and will be expected to use the same seat while the Social Distancing plan is in effect.**
- **With the large number of returning students coming back for Face-to-Face instruction, we will no longer be able to guarantee that students are separated in the cafeteria by 1-2 seats. Students will be asked to keep their masks on while seated in the cafeteria unless they are eating.**

## **S**Ocially DISTANCING - DURING LUNCH

- Once seated, each row will be called to enter the cafeteria lines and students will be **REQUIRED** to social distance while waiting to get their food. Students who bring their own lunch will remain seated when their row is called to enter the lunch line.
- Students will remain seated throughout the lunch period and will need to get permission by raising their hand to use the restroom or to use the vending machines.
- The number of students using the restroom at any given time during lunch will be restricted.

## **S**OCIALLY DISTANCING - DURING LUNCH

- **Lunch waste will be picked-up during lunch by school staff who will be circulating with waste bins towards the end of the lunch period.** Please encourage your student to be responsible and to help us by not making unnecessary messes during lunch.
- **Students will be dismissed from lunch by row, and we will stagger the dismissal of rows to create the greatest amount of social distancing possible.**

# **S**OCIALLY DISTANCING – AT THE END OF THE DAY

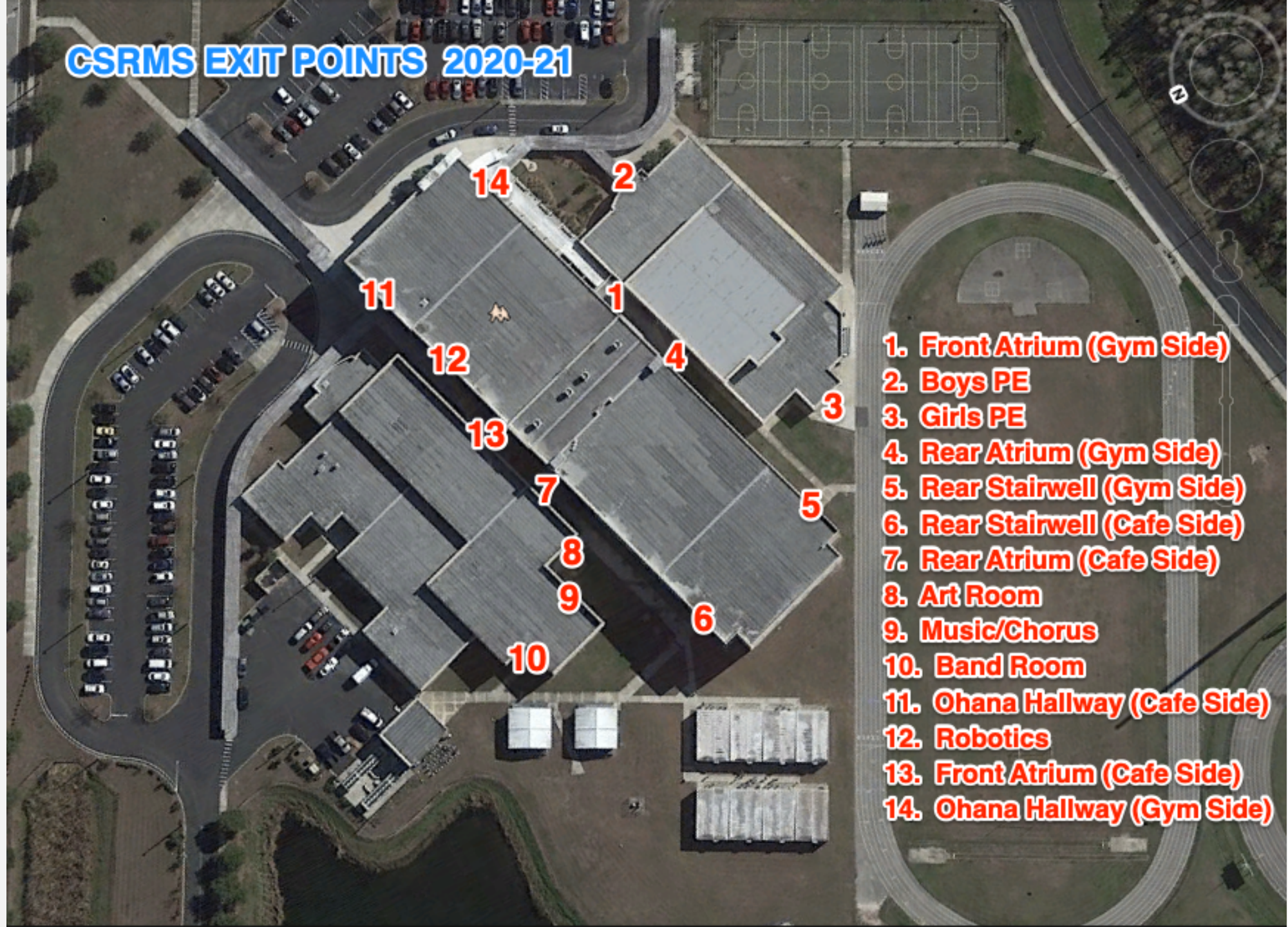
- **The Front Office will announce student dismissal by floor**
- **ALL students will be assigned a specific exit location** and we will utilize as many exit points as possible.
- Students will exit the building through the stairwell and/or doors located nearest to their 6<sup>th</sup> period class. **6<sup>th</sup> period teachers will orient their students to the proper exit location and will walk their students as a class to the exit location.**



## **S**OCIALLY DISTANCING – AT THE END OF THE DAY

- **When outside, students are REQUIRED to wear masks IF they are not able to socially distance from other students.** This includes while waiting for parent pick-up and/or while walking or bicycling home.
- **Students are REQUIRED to wear a mask while boarding the bus and for the entirety of the bus ride!**
- **Students are not to loiter/congregate with other students after being dismissed from school and are REQUIRED to IMMEDIATELY go to their departure location (Bus, Car, Bike/Walk).**

## CSRMS EXIT POINTS 2020-21



1. Front Atrium (Gym Side)
2. Boys PE
3. Girls PE
4. Rear Atrium (Gym Side)
5. Rear Stairwell (Gym Side)
6. Rear Stairwell (Cafe Side)
7. Rear Atrium (Cafe Side)
8. Art Room
9. Music/Chorus
10. Band Room
11. Ohana Hallway (Cafe Side)
12. Robotics
13. Front Atrium (Cafe Side)
14. Ohana Hallway (Gym Side)

## ONE-WAY HALLWAYS

We will follow a **ONE-WAY** traffic pattern in hallways for any travel that is more than going to the classroom next door or when exiting the building at the exit nearest your 6<sup>th</sup> period class. (This includes passing between classes, going to lunch, and any other time when there are larger numbers of students in the hallways)

- Masks are **REQUIRED** during **ALL** passing/transition periods.
- **Students will be required to enter their next class IMMEDIATELY and will not be allowed to loiter/congregate/socialize in the atrium/common areas during the transition periods.**





Signs are posted in Hallways showing the direction of travel and students are **REQUIRED** to follow the direction of travel designated on the signs.

Students traveling **Off-Team** (Electives) for their next period will be dismissed from class **FIRST** while students who are remaining **On-Team** will be dismissed 60 seconds **LATER**. The intention is to reduce the number of students transitioning at any given time.

Teachers will be monitoring the hallways and will encourage students to enter class immediately and to not loiter/congregate in the hallways.

## Building 1



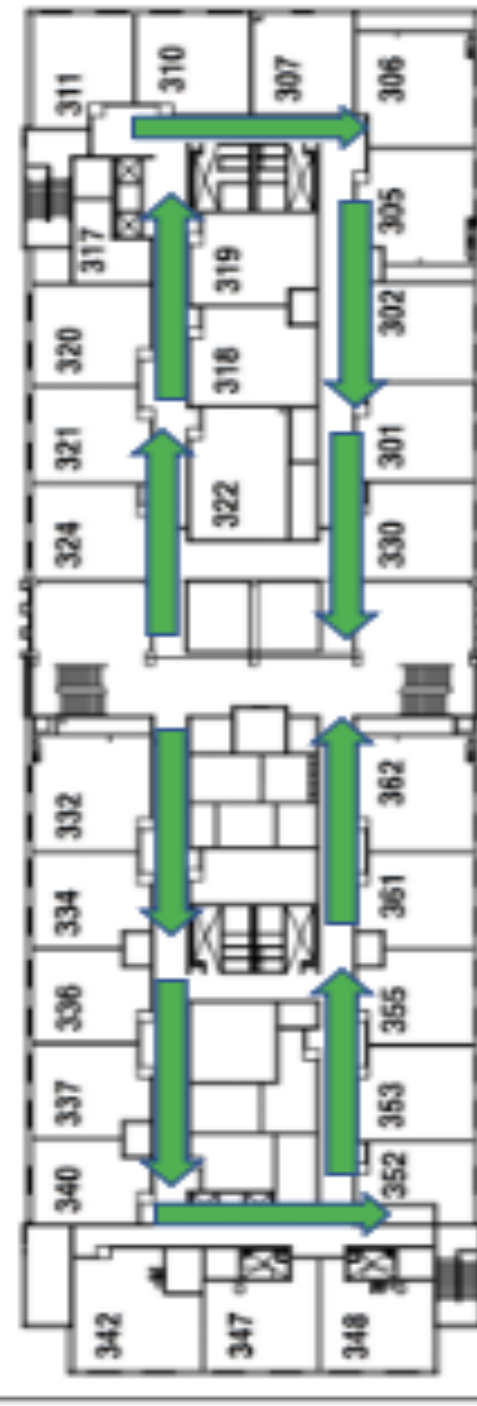
1st Floor



2nd Floor



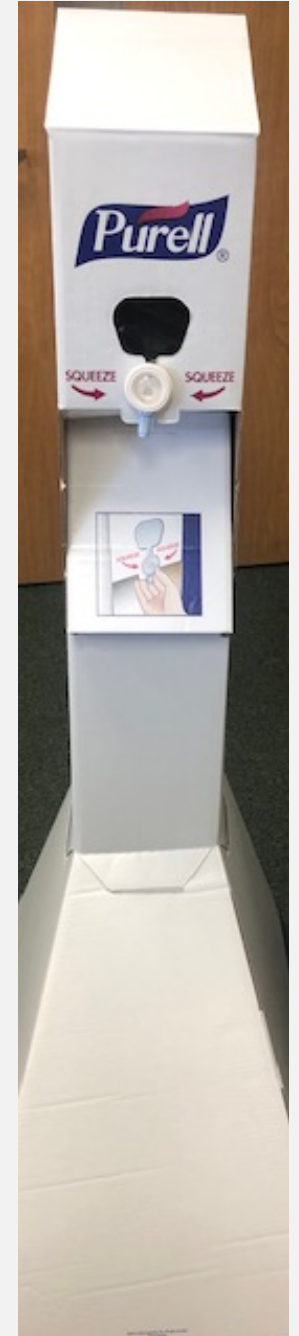
3rd Floor





# APPLYING PROPER HYGIENE PRACTICES

- **ALL** individuals should wash their hands often with soap and water for at least 20 seconds or use hand sanitizer, which has been placed throughout the school building. Sanitizing dispensers have been placed at entrances to the building, entry to hallways, and will also be available in each classroom.
- Teachers will remind/encourage students to utilize the hand sanitizer located in the classroom and students are welcome to bring their own hand sanitizer to school.
- **This is a critical component to helping stop the spread of CORONAVIRUS!!**



# APPLYING PROPER HYGIENE PRACTICES

- Persons who are exhibiting symptoms such as an elevated temperature, fever, coughing, sneezing, or flu-like symptoms are **NOT** permitted on School Board-owned property or at school-sponsored events. **Students who exhibit such symptoms are to be immediately removed from the brick and mortar educational environment or any other school-sponsored activity and are to be educated utilizing My School Online.**
- Rushe has implemented an “**Isolation Suite**” to keep potentially sick students isolated from other students until parents are able to pick them up from school.



## **A**PPLYING PROPER HYGIENE PRACTICES

- **Teachers will disinfect/sanitize tables/desks at the start of their planning period, during lunch, and at the end of the school day with a disinfectant cleaner – SPARTAN HD NEUTRAL**
- **A cleaning schedule will be implemented for high contact areas (bathrooms, door handles, railings, etc.) and our custodial team will disinfect these areas several times throughout the day.**
- **Each evening**, our custodial team will wipe down **ALL** floors with a germicidal soap, disinfect all classrooms, sanitize entry door handles, and sanitize all high contact areas with a disinfectant cleaner.

## **A**PPLYING PROPER HYGIENE PRACTICES

- **Students in Middle School or High School may not purposefully engage in conduct that would lead to the intentional spread of COVID-19,** or who otherwise behave in a manner that could lead a reasonable person to believe that they are attempting to cause the intentional spread of COVID-19.
- **Spitting** on School Board-owned property in areas trafficked by persons **is not permitted** during the COVID-19 state of emergency.

# **A**PPLYING PROPER HYGIENE PRACTICES

- **Students who are not members of the same household should NOT share writing utensils, eating utensils, drinks, snacks, or food** in such a way that could lead to an increased risk of exposure to COVID-19.
  - Materials for classroom libraries and items from the Media Center are not available to be checked out while the Social Distancing Plan is being implemented. Students will use digital copies of textbooks via My Learning in My Pasco Connect and may be able to check out digital copies of other reading materials.
- **Students who are not members of the same household are to avoid public displays of affection such as hugging, kissing,** and otherwise being in close proximity that is not consistent with social distancing.



# R ESPECTING MASK WEARING

- **“MASKS”** include masks, scarfs, bandannas, fishing buffs, and other items made of a material that will cover the nose and mouth and prevent or reduce the release of respiratory droplets from the wearer’s mouth or nose.
- Mesh face coverings, wearing face coverings incorrectly, punching holes in them, or modifying them in such a way that reduces effectiveness is **PROHIBITED**.
- Face coverings such as ski masks, gas masks, Halloween masks, costume masks, ninja masks, pantyhose, full face masks, or other face coverings that obstruct a wearer’s vision or face are **NOT** allowed!
- **Face coverings must comply with the dress code** as set forth in the Student Code of Conduct, and shall not contain profane, offensive, or disruptive subject matter. Failure to abide with this provision will result in discipline under the Student Code of Conduct and the student may be sent home when the mask contains content that would be inappropriate for the educational environment.
- Face coverings should **NOT** be shared.

## **R**ESPECTING MASK WEARING

- Masks are **REQUIRED** to be worn on the school bus, during classes, when entering/exiting the building, during all transition periods, as well as when in line in the cafeteria.
- Other than when exempted by a medical condition or due to a specific activity (outside during PE, Band, eating lunch, etc.), students are **REQUIRED** to wear a mask at **ALL** times while in the building.

Failure to comply with these rules may result in the student losing the opportunity to attend CSRMS in a face-to-face manner!!

## **R**ESPECTING MASK WEARING

- **Students in Middle School or High School may NOT steal, hide, vandalize, destroy, or otherwise intentionally interfere with another person's ability to wear a face covering or personal protective equipment.**

**Failure to comply with these rules may result in the student losing the opportunity to attend CSRMS in a face-to-face manner!!**

## VIOLETIONS OF SOCIAL DISTANCING POLICIES

- Students who violate the District's/School Social Distancing Policy will be counseled, along with their parent/guardian(s), regarding their behavior.
- The “counseling” session will include:
  - At least one, but **NO** more than three, verbal warnings or reminders to the student by staff
  - After the above warning(s) or reminder(s) have been provided, then there will be an in-person, telephonic, or virtual conference with **BOTH** the student and the parent/guardian(s) simultaneously
  - During the conference with the student and parent/guardian(s), there will be a **required viewing of a CDC video** as well as review of the CDC guidance;
  - During the conference, the parent/guardian(s) will be notified that continued noncompliance with the emergency rule may result in the student being removed from the brick and mortar school, and being educated utilizing one of the virtual or distance learning opportunities made available by the School Board.

## VIOLATIONS OF SOCIAL DISTANCING POLICIES

- After the “counseling”, **IF** the student continues to violate the District/School Social Distancing Policy, the student is to be **IMMEDIATELY** removed from the brick and mortar educational environment or any other school-sponsored activity **AND is to be educated utilizing My School Online.**

WE ARE ALL IN THIS TOGETHER...

Please help us stop the spread of Covid-19  
and to keep our students, staff, and  
community healthy!

Help us SOAR to  
Success!!

