

WELCOME TO CSRMS

6TH GRADE PARENT NIGHT

MOVING  UP TO
MIDDLE SCHOOL

Changing Expectations
When more is expected, more is achieved!



CHARLES S. RUSHE MIDDLE SCHOOL
Home of the Ravens

AGENDA

1. PTSA
2. PEOPLE TO KNOW
3. SUPERVISION
4. SCHOOL WIDE EXPECTATIONS
3. ON-TRACK STATUS
4. DISCIPLINE
5. DRESS CODE
6. SCHEDULING
7. MIDDLE SCHOOL REQUIREMENTS/CURRICULUM
-PRESENTATION BY CORE CONTENT TEACHERS



6. BOAR ACADEMY

CHARLES S. RUSHE MIDDLE SCHOOL

Home of the Ravens

AGENDA CONTINUED

- 8. STUDENT ACTIVITIES
- 9. DATES TO REMEMBER
- 10. SOAR ACADEMY



CHARLES S. RUSHE MIDDLE SCHOOL
Home of the Ravens

JOIN PTSA

WELCOME PTSA PRESIDENT KATE LEONARDO

**JOIN
THE
PTSA**

PTSA[®]
Parent ~ Teacher ~ Student ~ Association



CHARLES S. RUSHE MIDDLE SCHOOL
Home of the Ravens

CSRMS Staff



Mrs. Boehmer – AP
Mrs. Druschel – School Counselor



Mr. Salerno- Principal
Mrs. Boehmer – Assistant Principal
Mr. Middleton Assistant Principal
Kristy Blazys – Assistant Principal



Ms. Paula
Ms. Sharri
Front Office

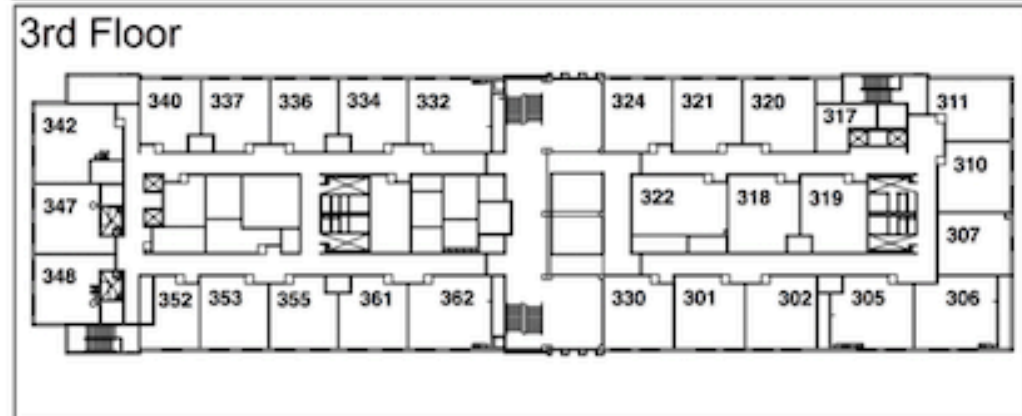
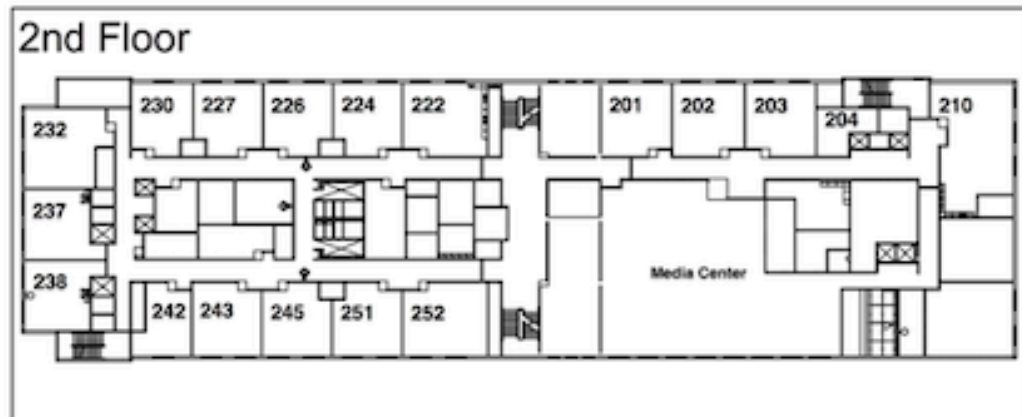


CHARLES S. RUSHE MIDDLE SCHOOL
Home of the Ravens

TEAMS/LOCATIONS



INSIDE CSRMS



The **1st floor** is the location for the **6th grade teams**.

There are other classes stationed outside in the portables as well.

(Research/Health)

The **2nd floor** is primarily **7th grade teams**, including reading and some elective/CCTE classes.

The **3rd floor** is primarily **8th grade teams**, including some CCTE/Elective/Foreign Language classes.



CHARLES S. RUSHE MIDDLE SCHOOL

Home of the Ravens



SUPERVISION

- School Hours are from 7:25 a.m. to 1:52 p.m.
- Students must not be on campus more than 30 minutes before school (6:55 a.m.) or more than 30 minutes after school (2:22 p.m.) without permission from a staff member.
- 3 Minutes of passing between each period
- 30 Minute lunch period



CHARLES S. RUSHE MIDDLE SCHOOL
Home of the Ravens

Bell Schedule

2021-2022 CSRMS Bell Schedule

Period	Times							
1	7:25-8:19							54 min
AIR	8:22-8:52							30 min
2	8:55-9:45							50 min
A		B		C		D		
Lunch	9:48-10:18	3	9:48-10:38	3	9:48-10:38	3	9:48-10:38	30 min lunches
3	10:21-11:11	Lunch	10:41-11:11	4	10:41-11:31	4	10:41-11:31	50 min
4	11:14-12:04	4	11:14-12:04	Lunch	11:34-12:04	5	11:34-12:24	50 min
5	12:07-12:57	5	12:07-12:57	5	12:07-12:57	Lunch	12:27-12:57	50 min
6	1:00-1:52							52 min

2021-2022 CSRMS Early Release Days

Period	Times							
1	7:25-8:04							39 min
2	8:07-8:43							36 min
6	8:46-9:22							36 min
A		B		C		D		
Lunch	9:25-9:55	3	9:25-10:01	3	9:25-10:01	3	9:25-10:01	30 min lunches
3	9:58-10:34	Lunch	10:04-10:34	4	10:04-10:40	4	10:04-10:40	36 min
4	10:37-11:13	4	10:37-11:13	Lunch	10:43-11:13	5	10:43-11:19	36 min
5	11:16-11:52	5	11:16-11:52	5	11:16-11:52	Lunch	11:22-11:52	36 min

2021-2022 CSRMS Activity Bell

Period	Times							
1	7:25-8:11							46 min
2	8:14-9:00							46 min
6	9:03-9:49							46 min
A		B		C		D		
Lunch	9:52-10:22	3	9:52-10:38	3	9:52-10:38	3	9:52-10:38	30 min lunches
3	10:25-11:11	Lunch	10:41-11:11	4	10:41-11:27	4	10:41-11:27	46 min
4	11:14-12:00	4	11:14-12:00	Lunch	11:30-12:00	5	11:30-12:16	46 min
5	12:03-12:49	5	12:03-12:49	5	12:03-12:49	Lunch	12:19-12:49	46 min
IR/Activit	12:52-1:52							60 min

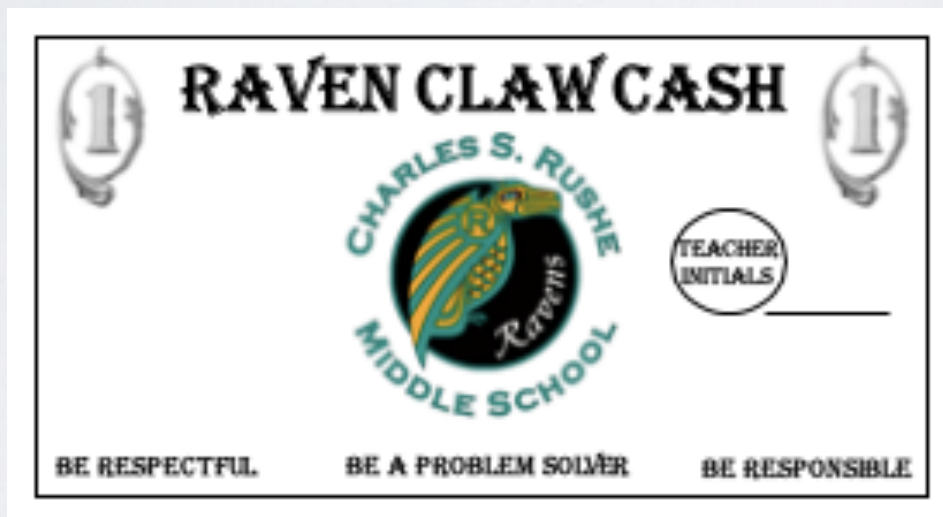
Period	Times
1	7:25-8:19
AIR	8:22-8:52
2	8:55-9:45
A	
Lunch	9:48-10:18
3	10:21-11:11
4	11:14-12:04
5	12:07-12:57
6	1:00-1:52

SCHOOL WIDE EXPECTATIONS

Be Respectful- To students and staff

Be Responsible- Be accountable and dependable

Be a Problem Solver- Always look for solutions to problems






CHARLES S. RUSHE MIDDLE SCHOOL
Home of the Ravens

MIDDLE SCHOOL EXPECTATIONS



At-Risk / Early Warning System: What matters for staying on track and graduating?

Middle School EWS Indicators							
On - Track Indicators	Course Performance	Attendance	GPA *	Office Discipline Referrals	Out of School Suspensions	In School Suspensions	Assessments
 On-Track	C's or better in all classes	0-2 absences in a quarter <hr/> 4% or less absences in a year	2.5 or higher	0 ODR's in a quarter <hr/> 2 or fewer ODR's in a year	0 OSS's in a quarter <hr/> 0 OSS's in a year	0 ISS's in a quarter <hr/> 0 ISS's in a year	Level 3 - 5
 At-Risk for Off-Track	1 or more D's in any class	3 to 4 absences in a quarter <hr/> 5% - 9% absences in a year	2.0 – 2.49	1 ODR In a quarter <hr/> 3 ODR's in a year	N/A	N/A	Level 2
 Off-Track	Failing 1 or more classes (F's)	5 or more absences in a quarter <hr/> 10% or more absences in a year	Less than 2.0	2 or more ODR's in a quarter <hr/> 4 ODR's in a year or 2 ODR's in a semester	1 or more OSS's for the year	1 or more ISS's for the year	Level 1

*Note: GPA is an overall average of current course grades (sum of grade values / # of classes) (A=4, B=3, C=2, D=2, F=1)

ON-TRACK RAVENS

Boehmer, Addison

ON TRACK




Quarters
On-Track
1

1st Period Teacher:
Roush, Jeffrey K Grade: 08

Boehmer, Addison

ON TRACK



Quarters
On-Track
1 2

1st Period Teacher:
Roush, Jeffrey K Grade: 08



CHARLES S. RUSHE MIDDLE SCHOOL
Home of the Ravens

STUDENT ATTENDANCE

There are only 180 school days in an academic year.

If a student misses:

1 day of school = 270 minutes of instruction

3 days of school = 810 minutes of instruction

5 days of school = 1,350 minutes of instruction

10 days of school = 2,700 minutes of instruction

15 days of school = 4,500 minutes of instruction



CHARLES S. RUSHE MIDDLE SCHOOL

Home of the Ravens

STUDENT ATTENDANCE

- When possible, please provide 24 hours notice of absences. Please report your absence on our CSRMS website - Report Student Absence tab
- If not done within 3 days of the absence, typically student absence will be considered unexcused.
- Student's responsibility to get missed work.
- Excused absences are granted for:
 - Illness of the student or major illness of an immediate family member;
 - Death of a student's immediate family;
 - Religious holidays; religious instruction;
 - Trips deemed appropriate by the principal and approved in advance.



CHARLES S. RUSHE MIDDLE SCHOOL

Home of the Ravens

STUDENT DISCIPLINE

TEACHER BASED

- Gum
- Tardies
- Electronic devices
- Cheating or Plagiarism
- Talking in class
- Sleeping in class
- Drinks/Food in class
- Abuse/Misuse of technology *
- Public display of affection*
- Calling out
- Inappropriate attitude *
- Refusing to do work
- Put downs
- Inappropriate comments
- Refusal to follow a reasonable request
- Dishonesty *
- Harassment *

ADMINISTRATION BASED

- Fighting or aggressive physical contact
- Possession or selling tobacco, drugs or alcohol
- Possession of weapons, matches or lighters
- Threats
- Bullying/Harassment
- Aggressive language
- Abuse/Misuse of technology
- Skipping class
- Vandalism
- Major disrespect
- Public display of affection
- Chronic classroom disruptions
- Theft
- Campus disruption
- Truancy
- Dress Code
- Dishonesty
- Throwing/Propelling objects
- Chronic minor infractions



CHARLES S. RUSHE MIDDLE SCHOOL

Home of the Ravens

CSRMS IS A BULLY-FREE SCHOOL

Bullying is any unwanted, aggressive act which is repeated over time and that involves a real or perceived imbalance of power.

If bullied, the following steps will be taken:

- Student reports to adult at school.
- School investigates (speak with students).
- Document to track patterns of behavior.
- Implement appropriate intervention.

If it continues:

Contact parents - share information.

Establish behavioral agreement between students.

If still continues:

Review patterns of behavior, contact both parents.

Suspend bully; involve law enforcement



CHARLES S. RUSHE MIDDLE SCHOOL

Home of the Ravens

STUDENT DISCIPLINE

1. STUDENT CODE OF CONDUCT
2. STUDENT BY STUDENT
3. DATA DRIVEN
4. PROGRESSIVE – BASED ON SITUATION/INCIDENT



CHARLES S. RUSHE MIDDLE SCHOOL

Home of the Ravens

STUDENT DISCIPLINE

MIDDLE SCHOOL IS DIFFERENT—

THINGS YOU MAY NOT HAVE GOTTEN A STUDENT DISCIPLINE FOR IN ELEMENTARY SCHOOL, MOST LIKELY WILL RESULT IN A STUDENT DISCIPLINE IN MIDDLE SCHOOL. **WHY??**

1. **MORE STUDENTS**
2. **MORE FREEDOM**
3. **BIGGER FEELINGS**

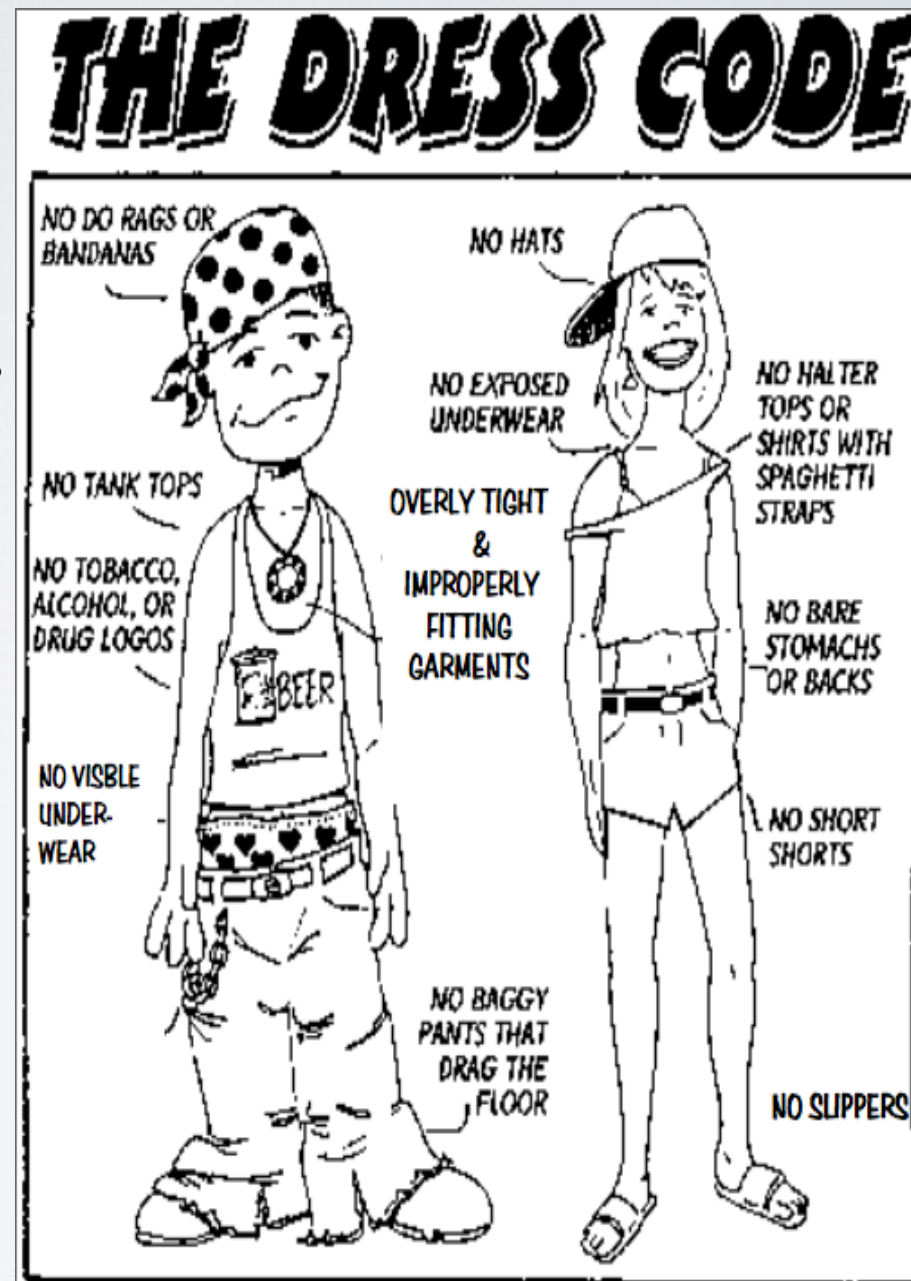


CHARLES S. RUSHE MIDDLE SCHOOL
Home of the Ravens

DRESS CODE EXPECTATIONS

1. No holes more than 4" above the knee.
2. No pants that expose undergarments.
3. Shirts must cover the shoulders, cleavage, stomach, & back.
4. No sleeveless shirts, tank tops, off-the-shoulder tops, halter necks, or spaghetti straps.
5. Shorts/skirts & dresses no more than 4" above the knee.
6. No hats, hoods, bandanas or hip chains.
7. No Flip-flops, slides, or slippers.
8. No accessories with obscene, crude or rude writing pertaining to drugs, alcohol, violence, weapons, sex, or racial context.

Students aren't allowed to attend class when not properly dressed. Change clothes, call home for a change of clothes, or go to ISS until appropriate clothing is available.



we know that we check!



CHARLES S. RUSHE MIDDLE SCHOOL
Home of the Ravens

ELECTRONIC/BYOD POLICY

BRING YOUR OWN DEVICE

These rules are specific to common areas such as cafeteria, hallways, bathrooms, locker rooms, track, bus and car loop, etc.

Students are responsible for their own devices. Do not lend your phone or borrow a phone from another student.

All electronic devices should be kept on Silent Mode. Not complying with this rule will result in disciplinary action.

Students are allowed to use electronics in the hallways and cafeteria freely as long as they abide by the rules above.

Electronic privileges can be revoked if students do not respect the policies and procedures in place.



CHARLES S. RUSHE MIDDLE SCHOOL

Home of the Ravens

ELECTRONIC/BYOD POLICY

BRING YOUR OWN DEVICE

There is absolutely no use of electronics allowed in any restrooms or locker rooms. Electronics should be put away at all times.

Taking of pictures or videos is not allowed on campus unless authorized by your teacher for educational purposes.

Making phone calls is prohibited from the moment you come on campus to the moment you leave without explicit permission from a school staff member.

If you need to use a phone, go to the front office or get permission first!



CHARLES S. RUSHE MIDDLE SCHOOL

Home of the Ravens

Charles S. Rushe Middle School 2020-2021

BYOD Policy (Bring Your Own Device):

Rationale: We believe equitable access to technology will aid our students in becoming responsible, productive citizens, and lifelong learners. Today's students use technology to learn. Technology is essential to facilitate the problem solving, information fluency, and collaboration that we see in today's society. We want our students to be purposeful, digital contributors in our community; we also want them to be safe and responsible when using technology. Our BYOD policy supports our vision of technology use and digital citizenship.

Policy: Students may bring their personal electronic devices to school in order to enhance learning and demonstrate the ethical use of technology. Devices include Smartphones, Tablets, Laptops, iPods, Earbuds/headphones, Bluetooth speakers or any other sound projection device, eReaders, and other similar devices. The school is not responsible for lost, stolen, or damaged equipment. Devices must always be using the school's WiFi network to prevent data plan overuse as well as to restrict access to inappropriate websites. **Students will adhere to the following school-wide guidelines.**

School Wide Guidelines for Electronic Device Use:

Allowed

- Classroom use for teacher directed instructional activities.

Not Allowed

- Disrupting the educational environment
- Recording, taking video or photos without teacher authorization. i.e. Classroom project.
- Personal texting during instructional time
- Wearing earbuds/headphones during school hours with the exception of the first 25 minutes of lunch and after exiting the building at dismissal.
- Playing music through a sound projection device, Bluetooth or other, while on school grounds.

Students are responsible for...

1. Keeping their equipment safe and secure. The school is not responsible for lost, damaged, or stolen equipment. Please note that instructional time will not be used to investigate lost/stolen equipment.
2. Appropriate Usage.
3. **Responding to adult direction at all times (putting away device when directed, etc.)**
4. Knowing and adhering to school-wide guidelines.
5. Knowing and adhering to the network use policy found in the student planner.
6. Keeping the ownership documentation, including serial number, at home.
7. Knowing how to use their device to enhance learning.
8. Becoming an expert on their own device.

Parents: Please help us protect instructional time by communicating with your child electronically (text, voicemail, email, or phone call) only before/after school, during passing periods, and during your child's lunch. If there is an emergency and you need to contact your student, please contact the front office at (813) 346-1200 so that we can provide assistance

The school is not responsible for lost, stolen, or damaged equipment.

Students should remember the R.A.V.E.N. expectations regarding this privilege at all times:

- **R** – Responsible use of devices is always expected
- **A** – Always remember and understand the purpose for using devices is educational
- **V** – Various devices must always be using the school's WiFi network
- **E** – Everyone will always conduct him or herself responsibly online
- **N** – Never forget the instructions for device use must always be followed

Consequence

Continued disregard for the guidelines specified within this document would result in the teacher confiscating and turning the device over to the Principal and/or his designee. Parent must come to school to pick up. Further infractions of this policy may result in the student losing BYOD privilege for the remainder of the year as determined by Administration.

Dress Code

Students at CSRMS (face-to-face) must comply with the dress code as described in the Code of Student Conduct. Visit www.csrms.k12.fl.us to review acceptable dress code expectations. The principal and his designee(s) are the final arbiter of dress code at CSRMS and as such, their decision related to the appropriateness of a student's dress is final. Students who are identified as not meeting dress code will not be allowed to return to class until they have changed their clothes by either contacting a parent to bring a change of clothes to school that meets dress code, changed into other clothing the student had available at school that meets dress code, or agreed to wear an out-of-dress-code shirt provided by the school. Failure to follow any of these options will result in the student remaining in ISS for the remainder of the school day.

Students participating in mySchool Online should comply with the dress code as described in the Code of Student Conduct. The principal and his designee(s) are the final arbiter of dress code at CSRMS and as such, their decision related to the appropriateness of a student's dress is final. Students who are identified as not meeting dress code will be removed from the virtual classroom and a parent contact will be made by the teacher. Repeated violations may result in the parent being present during virtual instruction.

SOCIALLY DISTANCING
ONE WAY HALLWAYS
APPLYING PROPER HYGIENE PRACTICES
Respecting Mask Wearing



Face Covering and Social Distancing

All employees, contractors, visitors, and students **MUST** wear a mask or other face covering while on school property and/or engaged in school activities. This rule of general application is subject to the enumerated exemptions and exceptions. There are certain medical conditions for which wearing a face covering is contraindicated. All requests for a reasonable accommodation from the requirement to wear a face mask will be considered in accordance with the District's policies and procedures as well as all applicable laws, including the Americans with Disabilities Act, as amended, 42 U.S.C. § 12101, *et seq.*, § 504 of the Rehabilitation Act, as amended, 29 U.S.C. § 794, the Individuals with Disabilities Education Act, 20 U.S.C. § 1400, *et seq.* and/or any other applicable federal, state or local laws.

Proper social distancing **MUST** always be observed to the maximum extent possible. Students, staff, and visitors must remain six (6) feet away from persons that are not members of their household whenever feasible and possible.

Procedure Modifications Due to Prevailing Conditions:

Our Superintendent and School Board may modify any procedures or processes utilized to implement the protective efforts contained in the School Board's emergency rule so as to align efforts and actions with the prevailing conditions and local circumstances relative to COVID-19, as well as any additional or amended guidelines issued by the CDC and other health authorities. Any modification of process and procedures by the Superintendent for these reasons may be implemented immediately.

***Please visit nearpod.com utilizing the following code ODCUP for specific information relative to COVID-19 guidelines for students participating in face-to face classes at CSRMS.**

Student Code of Conduct

The 2020-2021 Code of Student Conduct outlines many important policies regarding student behavior and are in addition to the policies outlined previously in this document. You have acknowledged that you are aware of these guidelines via the myStudent Online portal beginning of the year registration process. You are aware of the school dress code and the rules excluding students not in dress code from the classroom and have reviewed the 2020-21 Code of Student Conduct with your student(s). These documents have allowed you to be aware of all rules, expectations, and important information contained in the Code of Student Conduct as well as school policies related to dress and the use of electronic devices.

SCHEDULING

Students are arranged on interdisciplinary teams.

CSRMS Teams: Ohana, Navigator, Infinity, Achieve

6 Classes/Courses

4 CORE

Math, ELA, Science, Social Studies

2 Electives

Lunch and Homeroom

<u>M/J LANG ARTS 1</u>	Online 01 [51] - OLA1TBAS - Kelli R Rapaport
<u>M/J GRADE 6 MATH</u>	Online 02 [52] - OMA2TBAS - Pascal Tekala
<u>M/J COMPRE SCI 1</u>	Online 03 [53] - OSA3 - Stephen Brown
<u>M/J US HIST</u>	Online 04 - OHA4 - Marilyn Denig
<u>M/J INTENS READ (MC)</u>	Online 05 [55] - ORD5 - Serena Anni Elena Dunn
<u>M/J HEALTH GR 6S</u>	Online 06 - S1 - OHA6 - Amanda J Iler
<u>HOMEROOM</u>	Online 10 [60] - OCRB - Roy B Bain

6th Grade Core Academic Requirements: Teachers must initial each course pairing requested:

Traditional Course Pairs

- ___ Language Arts & United States History
- ___ Grade 6 Mathematics & Comp. Science I

Advanced/Accelerated Course Pairs

- ___ Advanced Language Arts & Advanced United States History
- ___ Advanced **Grade 6 Mathematics** & Accelerated/Honors Comp. Science I
- ___ Advanced **Grade 7 Mathematics** & Accelerated/Honors Comp. Science I
- *Prerequisite course completion is required. (i.e. 6 Adv Math before 7 Adv Math)

Advanced Course Criteria: Placement in advanced courses will be based on grades in previous classes, standardized test scores, and teacher recommendations. Students may be moved to advanced level classes due to proficiency on their FSA or previous coursework. A Conference is required to move up or down a level once classes begin. Please see information on side 2 of this card regarding math and science acceleration.



CHARLES S. RUSHE MIDDLE SCHOOL
Home of the Ravens

MIDDLE SCHOOL REQUIREMENTS

Students must take and pass the following to be promoted to high school:



- 3 years of Language Arts
- 3 years of Social Studies
- 3 years of Math
- 3 years of Science
- Career Component

Students who fail any class must recover the course through Recovery or be retained in 8th grade.



CHARLES S. RUSHE MIDDLE SCHOOL
Home of the Ravens

SCHEDULING

All students take a semester of **Research/Health** and a semester of **PE+**

Math

Science

Social Studies (U.S. History)

Language Arts

Elective (2D Art, Theatre, Chorus, Band, Guitar, or Creative Writing)

* Students may be required to take an Intensive Reading class if they score below the standard on the FCAT (Level 1 or 2).



CHARLES S. RUSHE MIDDLE SCHOOL

Home of the Ravens

SCHEDULING

PE Waiver - We would like to have one on file in case the schedule does not include PE.

All students are required to take at least one semester of Physical Education each year. A completed PE waiver must be on file prior to obtaining a schedule that does not contain PE. If you've selected either a year-long course or the Theatre & 2D Art as one of your options, please complete the waiver below:

PE Waiver Statement: Senate Bill 610 requires the equivalent of one class period per day of physical education for one semester of each year for students in grades 6 – 8. The physical education requirement shall be waived for a student how meets one of the following criteria: a) The student is enrolled or required to enroll in a remedial course, b) the parent requests that the student enroll in another course from among those offered as options by the school district, or c) the student is participating in physical activities outside the school day, which are equal to or in excess of the mandated requirement.

After reading the PE Waiver Statement, I believe my child meets one of the listed criteria for an exemption and request a course other than PE. Please sign below.

Parent

Date



CHARLES S. RUSHE MIDDLE SCHOOL

Home of the Ravens

SCHEDULING

Electives

Rank order 1-6, in order of choice, 1 being top pick. Students in 6th grade may have up to one full period of electives. A PE waiver is required for year-long courses:

Semester Courses

_____ 2D Art & Physical Education
_____ Theatre & Physical Education

Year-long Courses*

_____ Creative Writing
_____ Guitar

_____ Band
_____ Chorus

Required (1 Period)

X Research & Health

Semester 1: August – December

PE/**Research**

Band+/**Research**

Accel Lit+/PE

Semester 2: January – May

Art/**Health**

Band+/**Health**

Accel Lit+/**Health**



CHARLES S. RUSHE MIDDLE SCHOOL

Home of the Ravens

SCHEDULE EXAMPLE

6 CLASSES/COURSES

4 CORE

2 ELECTIVES

Math (Basic or Adv)

ELA (Basic or Adv)

Social Studies (Basic or Adv)

Science (Basic or Adv)

Elective

Elective

Course	Period - Teacher
<u>M/J COMPSCI1 ACC HON</u>	Period 01 - SAB1 - Charles W Allen
<u>M/J GRADE 6 MATH ADV</u>	Period 02 - MAB2 - Holly M Vandiver
<u>M/J LANG ARTS 1, ADV</u>	Period 03 - LAB3 - Jennifer Marie Hull
<u>LUNCH</u>	Period 03/(9:54-10:24) - LUNA - TBA VACANT
<u>M/J US HIST ADV</u>	Period 04 - HAB4 - Nicole Renee Zivkovic
<u>M/J COMPRE PE GR6/7</u>	Period 05 - S2 - PB25 - Roy B Bain
<u>M/J HEALTH GR 6S</u>	Period 06 - S2 - HR26 - Ryan Christopher Fisher
<u>HOMEROOM</u>	Period 10 - 6BJH - Jennifer Marie Hull



CHARLES S. RUSHE MIDDLE SCHOOL

Home of the Ravens

SCHEDULE EXAMPLE

6 CLASSES/COURSES

4 CORE

2 ELECTIVES

Math (Basic or Adv)

ELA (Basic or Adv)

Social Studies (Basic or Adv)

Science (Basic or Adv)

Elective

Elective

<u>M/J LANG ARTS 1</u>	Online 01 [51] - OLA1TBAS - Kelli R Rapaport
<u>M/J GRADE 6 MATH</u>	Online 02 [52] - OMA2TBAS - Pascal Tekala
<u>M/J COMPRE SCI 1</u>	Online 03 [53] - OSA3 - Stephen Brown
<u>M/J US HIST</u>	Online 04 - OHA4 - Marilyn Denig
<u>M/J INTENS READ (MC)</u>	Online 05 [55] - ORD5 - Serena Anni Elena Dunn
<u>M/J HEALTH GR 6S</u>	Online 06 - S1 - OHA6 - Amanda J Iler
<u>HOMEROOM</u>	Online 10 [60] - OCRB - Roy B Bain



CHARLES S. RUSHE MIDDLE SCHOOL

Home of the Ravens

Bell Schedule

2021-2022 CSRMS Bell Schedule

Period	Times							
1	7:25-8:19							54 min
AIR	8:22-8:52							30 min
2	8:55-9:45							50 min
A		B		C		D		
Lunch	9:48-10:18	3	9:48-10:38	3	9:48-10:38	3	9:48-10:38	30 min lunches
3	10:21-11:11	Lunch	10:41-11:11	4	10:41-11:31	4	10:41-11:31	50 min
4	11:14-12:04	4	11:14-12:04	Lunch	11:34-12:04	5	11:34-12:24	50 min
5	12:07-12:57	5	12:07-12:57	5	12:07-12:57	Lunch	12:27-12:57	50 min
6	1:00-1:52							52 min

2021-2022 CSRMS Early Release Days

Period	Times							
1	7:25-8:04							39 min
2	8:07-8:43							36 min
6	8:46-9:22							36 min
A		B		C		D		
Lunch	9:25-9:55	3	9:25-10:01	3	9:25-10:01	3	9:25-10:01	30 min lunches
3	9:58-10:34	Lunch	10:04-10:34	4	10:04-10:40	4	10:04-10:40	36 min
4	10:37-11:13	4	10:37-11:13	Lunch	10:43-11:13	5	10:43-11:19	36 min
5	11:16-11:52	5	11:16-11:52	5	11:16-11:52	Lunch	11:22-11:52	36 min

2021-2022 CSRMS Activity Bell

Period	Times							
1	7:25-8:11							46 min
2	8:14-9:00							46 min
6	9:03-9:49							46 min
A		B		C		D		
Lunch	9:52-10:22	3	9:52-10:38	3	9:52-10:38	3	9:52-10:38	30 min lunches
3	10:25-11:11	Lunch	10:41-11:11	4	10:41-11:27	4	10:41-11:27	46 min
4	11:14-12:00	4	11:14-12:00	Lunch	11:30-12:00	5	11:30-12:16	46 min
5	12:03-12:49	5	12:03-12:49	5	12:03-12:49	Lunch	12:19-12:49	46 min
IR/Activit	12:52-1:52							60 min

Period	Times
1	7:25-8:19
AIR	8:22-8:52
2	8:55-9:45
A	
Lunch	9:48-10:18
3	10:21-11:11
4	11:14-12:04
5	12:07-12:57
6	1:00-1:52

AIR TIME (ALL-IN RAVENS)

STUDY HALL/INTERVENTION TIME

CSRMS Daily Bell Schedule 2020-2021

1 st Period	7:25-8:22
Study/Intervention (AIR) Time	8:25-8:55
2 nd Period	8:58-9:51

A		B		C		D	
Lunch	9:54-10:24	3	9:54-10:47	3	9:54-10:47	3	9:54-10:47
3	10:27-11:20	Lunch	10:50-11:20	4	10:50-11:43	4	10:50-11:43
4	11:23-12:16	4	11:23-12:16	Lunch	11:46-12:16	5	11:46-12:39
5	12:19-1:12	5	12:19-1:12	5	12:19-1:12	Lunch	12:42-1:12

6 th Period	1:15-2:10
------------------------	-----------

Each day, students are provided with a 30 min. time period in which they can get academic support.

Students will be scheduled with one of their team teachers (LA, MA, Sci, SS, or Elective Teacher assigned to their team) and are allowed to complete assignments and ask for assistance on misunderstood concepts.

NO Excuses for Missing Work!



CHARLES S. RUSHE MIDDLE SCHOOL
Home of the Ravens



CHARLES S. RUSHE MIDDLE SCHOOL

2021 - 2022

GRADE 6

Name: _____
Last name First name

Pasco Student ID: _____

School Last Attended: _____
School City State

6th Grade Core Academic Requirements: Teachers must initial each course pairing requested:

Traditional Course Pairs

____ Language Arts & United States History
____ Grade 6 Mathematics & Comp. Science I

Advanced/Accelerated Course Pairs

____ Advanced Language Arts & Advanced United States History
____ Advanced **Grade 6 Mathematics** & Accelerated/Honors Comp. Science I
____ Advanced **Grade 7 Mathematics** & Accelerated/Honors Comp. Science I
*Prerequisite course completion is required. (i.e. 6 Adv Math before 7 Adv Math)

Advanced Course Criteria: Placement in advanced courses will be based on grades in previous classes, standardized test scores, and teacher recommendations. Students may be moved to advanced level classes due to proficiency on their FSA or previous coursework. A Conference is required to move up or down a level once classes begin. Please see information on side 2 of this card regarding math and science acceleration.

Self-Contained Gifted Classes

Please disregard this section if your child has not yet qualified for gifted services in Pasco County. Teachers must initial approved courses:

Traditional Gifted Accelerated Courses

____ Gifted Language Arts
____ Gifted United States History
____ Gifted Accelerated Honors Comprehensive Science I
____ **Advanced Grade 6 Mathematics**

Double Accelerated Gifted Courses (Math)

____ Gifted Language Arts
____ Gifted United States History
____ Accelerated Honors Comprehensive Science I
____ **Advanced Grade 7 Mathematics**
*Prerequisite course completion is required. (Adv 6th before 7th Math)

*Students electing to not take all Gifted courses offered (E/LA, USH, Science) may not receive an approval for School Choice Placement at CSRMS when selecting 'Self-Contained Gifted' as the reason for requesting placement (unless applied and accepted to the SOAR Academy).

The CSRMS SOAR Academy

The CSRMS SOAR Academy (Secondary Online Academic Readiness) provides a program that expands your education through student-driven instruction, face-to-face instruction, and cutting-edge technology. This blended learning combines Pasco teacher-facilitated eSchool curriculum with face-to-face instruction. Students are allowed to work at their own pace or accelerate their own learning. Students will follow a pacing guide and meet individually with teachers weekly to discuss progress. The ideal candidate is motivated, independent, and ready to learn!

Students will attend their Language Arts, Math, Science, and Social Studies classes in a blended environment by utilizing live instruction along with online lessons. The highly qualified teachers implement one-on-one conferences, small group mini-lessons, interactive projects, and labs in each content area. Students enrolled will have access to a school computer during the day while on campus. Access to online content at home is preferred, but not required. Due to the different paces and organization of classroom vs. online curriculum as well as the significant cost of the online licenses per student the school incurs, a year-long commitment to the program is required.

Please mark if your child is interested in participating in the SOAR team and then complete the online application at:
<https://csrms.pasco.k12.fl.us/csrms-digital-academy/>

Electives

Rank order 1-6, in order of choice, 1 being top pick. Students in 6th grade may have up to one full period of electives. A PE waiver is required for year-long courses:

Semester Courses

____ 2D Art & Physical Education
____ Theatre & Physical Education

Year-long Courses*

____ Creative Writing
____ Guitar

Required (1 Period)

____ X Research & Health
____ Band
____ Chorus

CSRMS School Counselor must complete below regarding Accelerated Literacy, Math, and Personal, Career, and School

Development Skills. These are considered required courses at CSRMS if a student meets the criteria:

____ **Personal, Career, and School Development Skills:** Required for students with previous 6th grade course failures (2nd sem. transfers only).

____ **Accelerated Literacy:** Required elective course for students with FSA ELA scores of levels 1 or 2.

*Students not meeting FL Reading Standards may be placed into Accelerated Literacy or Accelerated Math in lieu of an elective. FSA scores, IRLA data, and previous course progress will be used as factors to determine placement.

Rank order 1-6, in order of
choice, **1 being top pick:**

Semester Courses

Theatre & Physical Education
2D Art & Physical Education

Year-long Courses

Band
Chorus
Creative Writing
Guitar

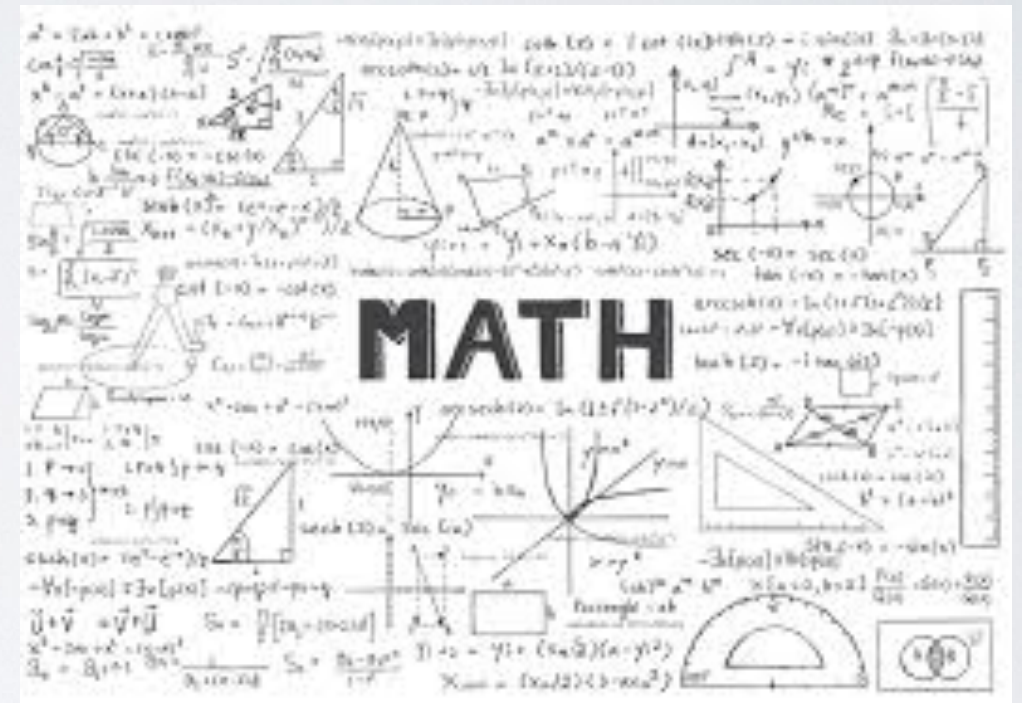
***PE Waiver required for
year-long courses.**

*** Research & Health**

MATH

MRS. VANDIVER TEAM OHANA

1. TYPICAL SUPPLIES NEEDED
2. STUDENT PROGRESSION
3. ADVANCED VS. TRADITIONAL



CHARLES S. RUSHE MIDDLE SCHOOL

Home of the Ravens

ENGLISH/LANGUAGE ARTS (ELA)

MRS. RAPAPORT TEAM NAVIGATORS

1. TYPICAL SUPPLIES NEEDED
2. STUDENT PROGRESSION
3. ADVANCED VS. TRADITIONAL

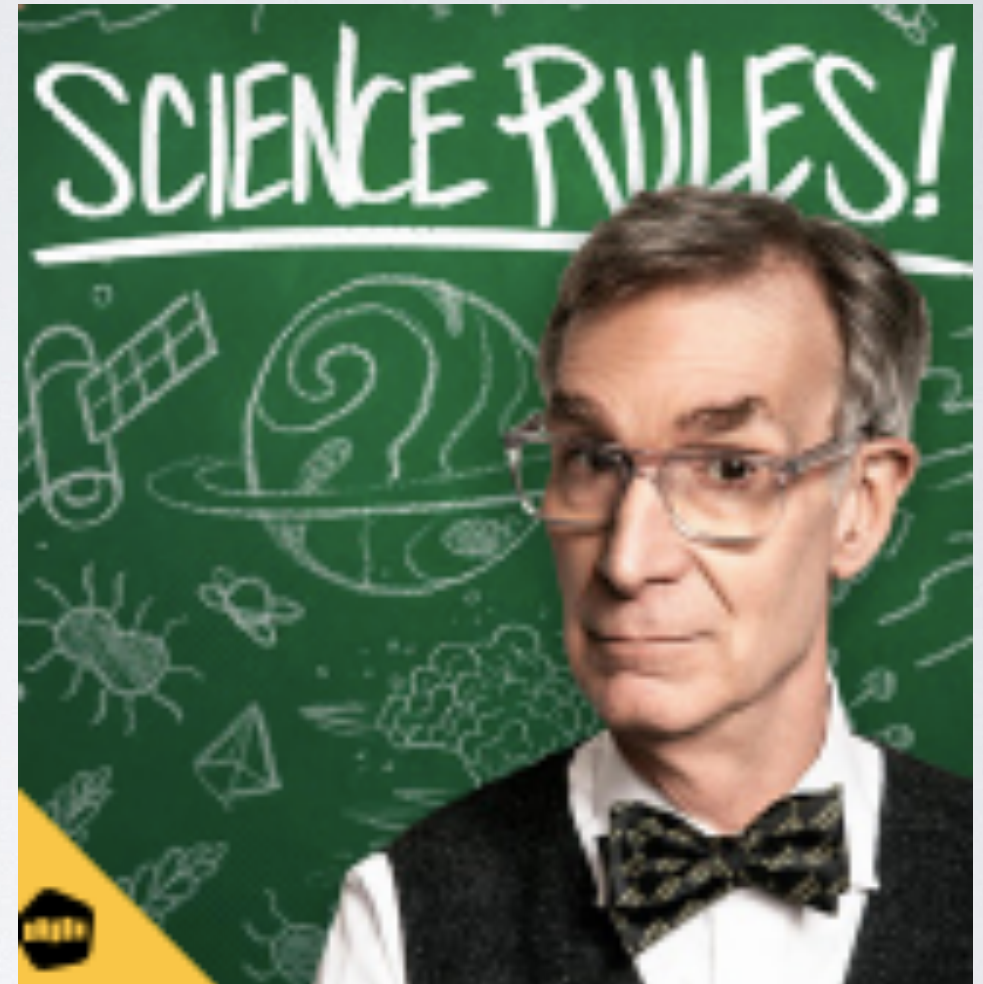


CHARLES S. RUSHE MIDDLE SCHOOL
Home of the Ravens

SCIENCE

MRS. ADKINS TEAM INFINITY

1. TYPICAL SUPPLIES NEEDED
2. STUDENT PROGRESSION
3. ADVANCED VS. TRADITIONAL



CHARLES S. RUSHE MIDDLE SCHOOL
Home of the Ravens

SOCIAL STUDIES (US HISTORY)

MR. SLAUGHTER TEAM ACHIEVE

1. TYPICAL SUPPLIES NEEDED
2. STUDENT PROGRESSION
3. ADVANCED VS. TRADITIONAL



CHARLES S. RUSHE MIDDLE SCHOOL

Home of the Ravens

CLUBS/SPORTS (SUBJECT TO CHANGE)

6TH GRADE STUDENTS CAN PARTICIPATE IN THE FOLLOWING SPORTS:
FOOTBALL, VOLLEYBALL (GIRLS), BASKETBALL (BOYS/GIRLS), SOCCER
(BOYS/GIRLS), TRACK (BOYS/GIRLS), AND CHEERLEADING

Students Working Against Tobacco (SWAT)

Fellowship of Christian Students (FCS)

National Junior Honor Society

Student Council

Builders Club

Thespian Club

Odyssey of the Mind

Chess Club

Color Guard Club



HOSA

Guitar Club

Biology Club

Animal Service Club

Fashion Club

Dungeons and Dragons

Film Club

Million Word Challenge

Travel Club



CHARLES S. RUSHE MIDDLE SCHOOL

Home of the Ravens

MYSTUDENT

An online grade book that allows students and parents to monitor student progress, review what has been covered in each class, and in some cases, lists what is planned for the upcoming days/weeks.

Preferences allow parents and students to receive communication via email/text message when grades have been entered or when grades fall below a specified level.



CHARLES S. RUSHE MIDDLE SCHOOL

Home of the Ravens

MYSTUDENT

Students and parents can establish their own account

Must register at the beginning of each school year

To register, you need the following information:

e-mail address

student number and social security number

Parent Access to myStudent



Parents, please use [this link](#) to create an account or log into myStudent to check grades and attendance.



CHARLES S. RUSHE MIDDLE SCHOOL

Home of the Ravens

TIMELINES



1. 6TH GRADE UNIVERSITY (**TBD**)

2. **AUGUST 5 – ORIENTATION/REGISTRATION (VIRTUAL)**

SEE SCHEDULES, PAY FEES, COMPLETE EMERGENCY CARD, ETC.

-6TH GR STUDENTS WILL BE ABLE TO WALK THEIR SCHEDULE

MORE INFORMATION TO COME

3. **AUGUST 10 –FIRST DAY OF SCHOOL FOR STUDENTS – YOU ARE OFFICIALLY RAVENS!**



CHARLES S. RUSHE MIDDLE SCHOOL
Home of the Ravens



WE ARE ALL IN THIS TOGETHER

Your child will be a Raven, and Ravens

Soar to Success!!



CHARLES S. RUSHE MIDDLE SCHOOL

Home of the Ravens

QUESTIONS??



CHARLES S. RUSHE MIDDLE SCHOOL

Home of the Ravens