

# CSRMS – HEALTH & WELLNESS PLAN

21-22 School year

WE WILL CONTINUE TO  
SOAR TO SUCCESS...

But we need your help  
this school year to make  
this a reality for us all!



## OUR CONTINUED SOAR FOCUS...

**S**OCIAL DISTANCING

**O**NE-WAY HALLWAYS

**A**PPPLYING PROPER HYGIENE PRACTICES

**R**ESPECTING HEALTH CHOICES OF OTHERS

## **H**EALTH & WELLNESS POLICIES FOR THE 21-22 SCHOOL YEAR

In order to maintain the health and wellness of our students, staff, and community as a whole, we will be implementing the following policies for the 21-22 school year.

- Encouraging mask wearing (as needed)
- Social distancing (when possible)
- Applying proper hygiene practices & asking that people make responsible decisions regarding their health and the health of others
- PLEASE REMEMBER – WE ARE **ALL** IN THIS **TOGETHER**

## MASK WEARING

Mask wearing is **OPTIONAL** for this school year while students are on campus and/or when riding on the school bus.

Students who are not vaccinated, have personal health concerns and/or have family members who are not vaccinated or also have health concerns are **ENCOURAGED** to wear a mask while inside the building.

# **S**OCIAL DISTANCING

**We will be implementing “Social Distancing” policies to the greatest extent possible.**

- Before/After School
- During Passing Periods
- During Lunch

## **S**OCIAL DISTANCING – ENTRY POINTS

Entry points will be posted on the Rushe website for all 1<sup>st</sup> period classes and are listed on the next slide:

Please use your child's schedule to identify the teacher that your child has for 1<sup>st</sup> period and use the entry point chart to identify the appropriate entry point for your student.

Entry point numbers will be posted at each entry point and a staff member will be present to guide students and check schedules to make sure that students are using the correct entry point.

<u>Ist Period Class</u>	<u>Assigned Entry Point #:</u>
Adkins	4
Allen	15
Andre	5
Arguelles	7
Aursland, J	13
Aursland, K	1
Bain	2 or 3
Bell	Portable 14
Brockman	9
Cairns	7
Cassels	12
Conway	14
Cook	10
Depue	4
Denig	6
Doychak	14
Egan	5
Ely	Portable 15
Fields, T	5
Fisher, R	Portable 19
Flatley	2 or 3
Floyd	1

<u>Ist Period Class</u>	<u>Assigned Entry Point #:</u>
Grassick	12
Hilton	14
Iler	Portable 18
Livingston	12
Longa	12
Mandelberg	6
Middleton, A	Portable 12
Nobles	1
Otero	4
Phan	4
Ramos	5
Rapaport	14
Robb-Davis	6
Roth	5
Roush	12
Russo	7
Seurattan	15
Shumate	6
Skaggs	14

<u>Ist Period Class</u>	<u>Assigned Entry Point #:</u>
Smith, D	12
Smith, J	7
Smith, S	6
Steady	5
St. Loius	7
Swenson	5
Tekaia	14
Tzounakos	5
Vandiver	4
Westlake	14
Williams, Sh.	14
Williams, St.	14
Wilson	8
Yasurek	4
Zivcovic	Portable 13
TBA Alg1 Hon 300	1
TBA LANG Arts 3 - 336	6
TBA World Hist - 157	5

**Entry points will be posted on the Rushe website for all 1<sup>st</sup> period classes:**

Please use your schedule to identify the teacher that you have for 1<sup>st</sup> period and use the entry point chart to identify your entry point.

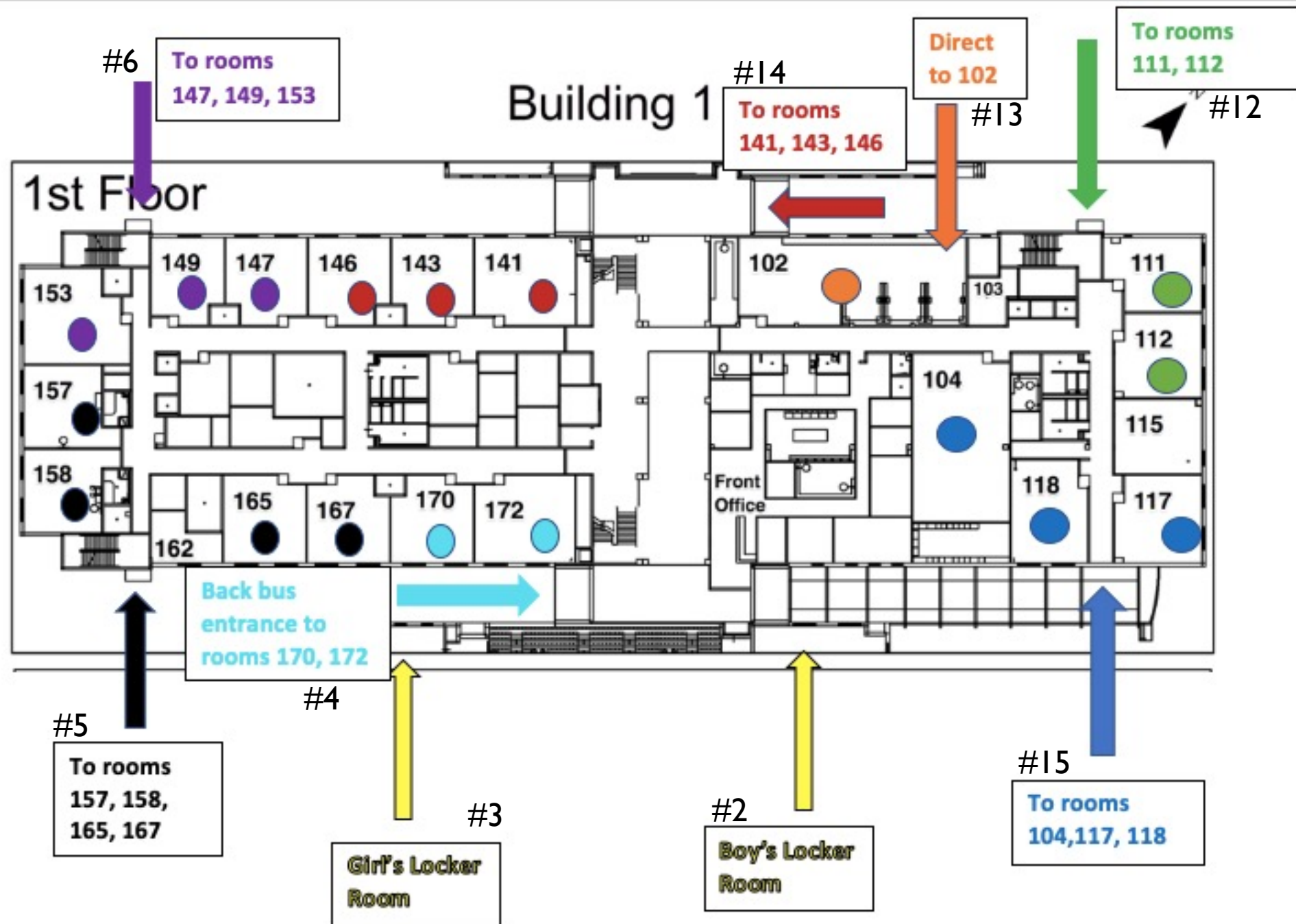
Entry point numbers will be posted at each entry point and a staff member will be present to guide students and check schedules to make sure that students are using the correct entry point.

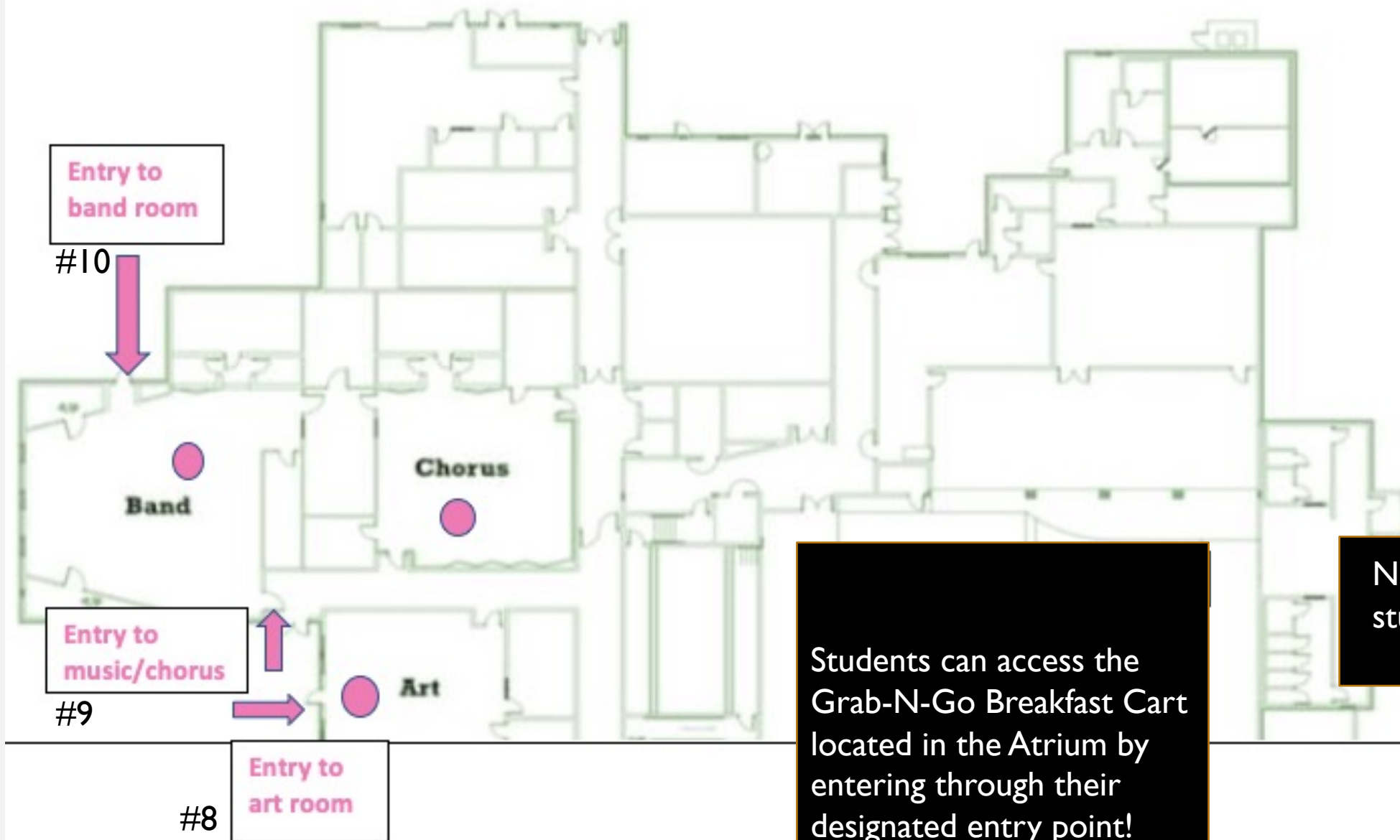


## CSRMS Entry/Exit Points 21-22









Up the back  
stairwell near  
portables to  
rooms 232, 230,  
227, 226

#6

To rooms 222, 224 from  
cafeteria-side atrium  
entrance and up stairwell  
on cafeteria side.

#14

Up the side  
stairwell to rooms  
201, 202, 203, 210

#12

2nd Floor



#5

Up the stairwell  
near track to  
rooms 237, 238,  
243, 245

#4

To rooms 252, 251 from  
gym-side atrium entrance  
(bus entrance) and up  
stairwell on gym side.

Rear atrium doors from portables, up stairwell on cafeteria side to rooms 318, 321, 322, 324, 332, 334

#7

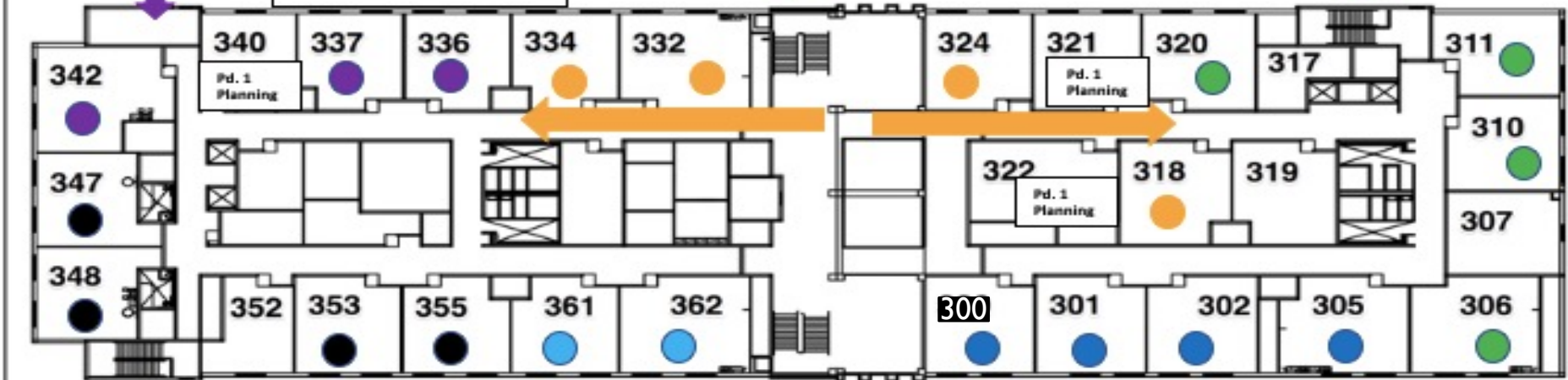
Up the side stairwell to rooms 306, 310, 311, 320

#12

3rd Floor

#6

Up the back stairwell near portables to rooms 336, 337, 342



#5

Up the stairwell near track to rooms 347, 348, 353, 355

#4

To rooms 361, 362 from gym-side atrium entrance (bus entrance) and up stairwell on gym side.

#1

Enter through double doors to the atrium near the gym and up the staircase near the gym to rooms 300, 301, 302, 305



## **S**OCIAL DISTANCING – BEFORE SCHOOL

- ALL Students will enter the building through their assigned entry point at 7:10 AM or as soon as they arrive on campus (if after 7:10 AM).
- We ask that parents drop-off students in the car loop CLOSEST to their student's assigned entry point and that drop-off occurs between 7:10 A.M. and 7:20 A.M.
- Students who ride a school bus will immediately exit their bus when it arrives at CSRMS and will wait at their designated entry point until 7:10 A.M.
- Students are REQUIRED to use their assigned entry point and to remain socially distanced as they wait to enter the school building prior to 7:10 AM.
- The entry point is determined by the location of each student's 1<sup>st</sup> period class AND not by how students arrive on campus!! Signs will be posted at each entry point

## **S**OCIAL DISTANCING – BEFORE SCHOOL

- At 7:10 A.M., the supervising staff member at each entry point will allow groups of students to enter the building depending on the floor of the students' first period class. The supervising staff members will remain at their assigned entry point until 7:25 A.M. Any students arriving after 7:25 A.M. should report to the front office entrance.
- When students arrive they will be required to go directly to their first period classroom and will NOT be allowed to mingle/socialize with other students in the Atrium or other common areas.
- Each classroom teacher will allow students to enter their classroom immediately and will supervise the students until the start of class at 7:25 A.M.

# SOCIAL DISTANCING – GRAB N GO BREAKFAST

- “Grab N Go Breakfast” will be available for pick-up between 7:10 A.M. and 7:20 A.M. in the Atrium at our “Grab N Go Breakfast” carts.
- For the 21-22 school year, ALL students will receive a FREE breakfast
- Students will not eat breakfast in the Atrium; rather, students will take their breakfast with them and will immediately report to their first period classroom and will eat their breakfast in their classroom.
- Students NOT eating breakfast should not be in the Atrium and are REQUIRED to use the entry point assigned to their first period class.



## **S**OCIAL DISTANCING – DURING SCHOOL

- Students who are not members of the same household should NOT share writing utensils, eating utensils, drinks, snacks, or food in such a way that could lead to an increased risk of exposure to COVID-19.
- Students who are not members of the same household are to avoid public displays of affection such as hugging, kissing, and otherwise being in close proximity that is not consistent with social distancing.

# **S**OCIAL DISTANCING – DURING LUNCH

We will use our Cafeteria for lunches, and we will space students out within those locations to the greatest extent possible.

Students will be assigned to specific lunches by class period and the expectation is that students will sit in an assigned seat during lunch.

Students will be given an opportunity at the beginning of the year to select their lunch seat and then will be expected to use that seat until further notice.

If a student needs to change their seat, they must speak with the Cafeteria Monitor to receive permission to make the change.

Lunch seating changes will be extremely limited!

## **S**OCIAL DISTANCING – DURING LUNCH

- Once seated, each row of tables will be called to enter the cafeteria lines and students will be REQUIRED to social distance while waiting to get their food. Students who bring their own lunch will remain seated when their row of tables is called to enter the lunch line.
- PLEASE NOTE THAT FOR THE 21-22 SCHOOL YEAR ALL STUDENTS MAY RECEIVE A FREE LUNCH!
- Students will remain seated throughout the lunch period and will need to get permission by raising their hand to use the restroom or to use the vending machines.
- The number of students using the restroom at any given time during lunch will be restricted.



## **S**OCIAL DISTANCING – DURING LUNCH

- Lunch waste will be picked-up during lunch by school staff who will be circulating with waste bins towards the end of the lunch period. Please encourage your student to be responsible and to help us by not making unnecessary messes during lunch.
- Students will be dismissed from lunch by rows, and we will stagger the dismissal of each row to create the greatest amount of social distancing possible.

# **S**OCIAL DISTANCING – AT THE END OF THE DAY

- **The Front Office will announce student dismissal by floor**
- **ALL students will be assigned a specific exit location** and we will utilize as many exit points as possible.
- Students will exit the building through the stairwell and/or doors located nearest to their 6<sup>th</sup> period class. **6<sup>th</sup> period teachers will orient their students to the proper exit location and will walk their students as a class to the exit location.**
- **We ask that students leave campus as soon as possible and do not congregate/loiter with other students once the school day has ended.**

## ONE-WAY HALLWAYS

We will follow a **ONE-WAY** traffic pattern in hallways for any travel that is more than going to the classroom next door or when exiting the building at the exit nearest your 6<sup>th</sup> period class. (This includes passing between classes, going to lunch, and any other time when there are larger numbers of students in the hallways)

- **Students will be required to enter their next class IMMEDIATELY and will not be allowed to loiter/congregate/socialize in the atrium/common areas during the transition periods.**



Signs are posted in Hallways showing the direction of travel and students are **REQUIRED** to follow the direction of travel designated on the signs.

Teachers will be monitoring the hallways and will encourage students to enter class immediately and to not loiter/congregate in the hallways.

# Building 1

## 1st Floor



## 2nd Floor



## 3rd Floor





## **A**PPLYING PROPER HYGIENE PRACTICES

- **ALL** individuals should wash their hands often with soap and water for at least 20 seconds or use hand sanitizer, which has been placed throughout the school building. Sanitizing dispensers have been placed at entrances to the building and entry to hallways.
- Teachers will remind/encourage students to utilize the hand sanitizer that students bring to school.
- **Proper hygiene is a critical component to helping stop the spread of CORONAVIRUS!!**

# APPLYING PROPER HYGIENE PRACTICES

- **ALL** persons coming to Charles S. Rushe Middle School **MUST** review the daily self-screener to make sure that anyone experiencing COVID-19 symptoms and/or other risk factors for COVID-19 **NOT** arrive on campus
  - All stakeholders (employees, students, visitors) will be required to perform the self-screener, **INCLUDING** vaccinated individuals.
  - Screener is required daily.
  - Screener will be placed on each school's website and district website.
- Rushe has implemented an “**Isolation Suite**” to keep potentially sick students isolated from other students until parents are able to pick them up from school.



## **A**PPLYING PROPER HYGIENE PRACTICES

- **Teachers will disinfect/sanitize tables/desks at the start of their planning period, during lunch, and at the end of the school day with a disinfectant cleaner – SPARTAN HD NEUTRAL**
- ***A cleaning schedule will be implemented for high contact areas (bathrooms, door handles, railings, etc.) and our custodial team will disinfect these areas several times throughout the day.***
- **Each evening, our custodial team will wipe down ALL floors with a germicidal soap, disinfect all classrooms, sanitize entry door handles, and sanitize all high contact areas with a disinfectant cleaner.**

## **A**PPLYING PROPER HYGIENE PRACTICES

- **Students in Middle School or High School may not purposefully engage in conduct that would lead to the intentional spread of COVID-19,** or who otherwise behave in a manner that could lead a reasonable person to believe that they are attempting to cause the intentional spread of COVID-19.

WE ARE ALL IN THIS TOGETHER...

Please help us stop the spread of Covid-19  
and to keep our students, staff, and  
community healthy!

Help us SOAR to  
Success!!

**S**OCIALLY DISTANCING

**O**NE-WAY HALLWAYS

**A**PPLYING PROPER HYGIENE PRACTICES

**R**ESPECTING HEALTH CHOICES OF OTHERS

