

6TH GRADE EXPECTATIONS

Changing Expectations

When more is expected, more is achieved!



CHARLES S. RUSHE MIDDLE SCHOOL

Home of the Ravens

CSRMS STAFF

**know who
can help you**



Principal: Mr. Salerno

Asst. Principal for 6th Grade - Mrs. Boehmer

School Counselor for 6th Grade – Mrs. Druschel

Resource Office - Corporal Curtis

Discipline Assistant - Mr. Davis

School Nurse - Ms. Kittling

Clinic Assistant – Ms. Yoder

Front Desk – Mrs. Bunker & Mrs. Hoyer

Data Entry – Mrs. Swab

Registrar – Mrs. Majowicz



**What do I need to know to
“Soar to Success”
this school year?**

know how to
behave

R Respectful
U Attentive
S Vigilant
H Engaged
E Neighborly
Successful



Honesty • have the courage to do the right thing • build a good reputation

Respect • be accepting of differences • be considerate of the feelings of others

Citizenship • respect all staff and students on digital technology and at school

Responsibility • think before you act • consider the consequences

Kindness • smile more and say hello • don't blame others for your mistakes

CSRMS – Schoolwide Behavioral Expectations

CSRMS Schoolwide Expectations

	Respectful	Responsible	Safe	Problem Solver
Classroom	<ul style="list-style-type: none"> • Use kind words • Talk only when you should 	<ul style="list-style-type: none"> • Follow directions • Complete your own work • Be prepared 	<ul style="list-style-type: none"> • Keep hands and feet to self • Be in designated area 	<ul style="list-style-type: none"> • Diffuse issues with the teacher and students calmly and politely
Cafeteria	<ul style="list-style-type: none"> • Use appropriate volume • Leave a clean space for others • Use ear buds for audio 	<ul style="list-style-type: none"> • Raise your hand for assistance • Recycle your tray 	<ul style="list-style-type: none"> • Stay seated until dismissal • Keep the aisle clear • Use entries/exits as directed 	<ul style="list-style-type: none"> • Discuss seating and line position issues calmly and politely
Hallways	<ul style="list-style-type: none"> • Use appropriate volume • Respect personal space 	<ul style="list-style-type: none"> • Move directly to your next class • Arrive on time 	<ul style="list-style-type: none"> • Always walk facing forward • Stay on the right side as you travel 	<ul style="list-style-type: none"> • Notify the nearest adult when supervision is required
Restrooms	<ul style="list-style-type: none"> • Always flush • Clean up after yourself 	<ul style="list-style-type: none"> • Always have a pass • Use your time wisely • One person per stall 	<ul style="list-style-type: none"> • Help keep floor clear and dry • Wash your hands 	<ul style="list-style-type: none"> • Notify an adult if the bathroom needs attention
Online	<ul style="list-style-type: none"> • Type/text only what you would say in person 	<ul style="list-style-type: none"> • Block conversations you wish to discontinue 	<ul style="list-style-type: none"> • Converse with people you know in person 	<ul style="list-style-type: none"> • Show inappropriate messages, pictures or texts to an adult when necessary

EARN RAVEN CLAW CASH



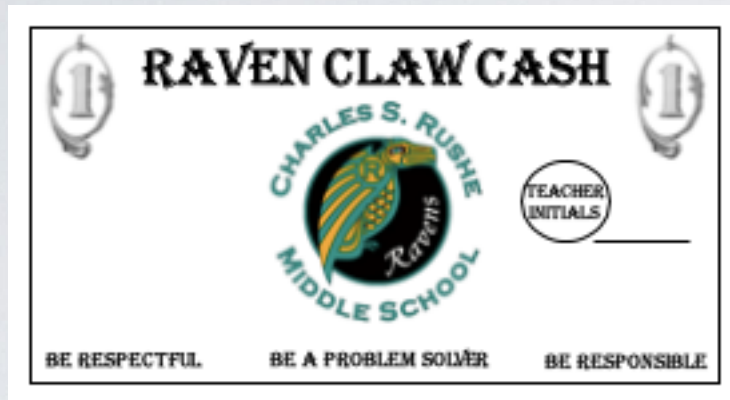
Be Respectful To students and staff

Be Responsible Be accountable and dependable

Be a Problem Solver Always look for solutions to problems



POSITIVE BEHAVIOR SUPPORTS AT CSRMS






Be:
Respectful
Responsible
A Problem Solver

Demonstrating these characteristics will earn students “Raven Claw Cash” which is part of a token economy system that will allow students to purchase items from the school store, prepackaged snacks, as well as other rewards for making great choices!

POSITIVE ACADEMIC & BEHAVIOR SUPPORTS AT CSRMS



At-Risk / Early Warning System: What matters for staying on track and graduating?

Middle School EWS Indicators							
On - Track Indicators	Course Performance	Attendance	GPA*	Office Discipline Referrals	Out of School Suspensions	In School Suspensions	Assessments
 On-Track	C's or better in all classes	0-2 absences in a quarter <hr/> 4% or less absences in a year	2.5 or higher	0 ODR's in a quarter <hr/> 2 or fewer ODR's in a year	0 OSS's in a quarter <hr/> 0 OSS's in a year	0 ISS's in a quarter <hr/> 0 ISS's in a year	Level 3 - 5
 At-Risk for Off-Track	1 or more D's in any class	3 to 4 absences in a quarter <hr/> 5% - 9% absences in a year	2.0 – 2.49	1 ODR in a quarter <hr/> 3 ODR's in a year	N/A	N/A	Level 2
 Off-Track	Failing 1 or more classes (F's)	5 or more absences in a quarter <hr/> 10% or more absences in a year	Less than 2.0	2 or more ODR's in a quarter <hr/> 4 ODR's in a year or 2 ODR's in a semester	1 or more OSS's for the year	1 or more ISS's for the year	Level 1

*Note: GPA is an overall average of current course grades (sum of grade values / # of classes) (A=4, B=3, C=2, D=2, F=1)

HOW CAN YOU HELP MONITOR YOUR STUDENT'S PROGRESS AT CSRMS

Be Positive = Help your child to maintain a “*can-do*” attitude!

Be Prepared = Help by checking their planner, help by monitoring completion of homework, and by cleaning out their backpack on a weekly basis

Be Prompt = Remind your student(s) that passing is for walking to their next class, not for hanging out with friends.

Be Committed to Quality = Help your student to always do their best & check work before handing it in for a grade

Be Present = Remind your student that you will be with them for the next three years and that you are committed to their success by monitoring both their grades as well as their communications with their friends/schoolmates

MyStudent -

An *online grade book* that allows students and parents to monitor student progress, review what has been covered in each class, and in some cases, lists what is planned for the upcoming days/weeks.

Preferences allow parents and students to receive communication via email/text message when grades have been entered or when grades fall below a specified level.

- Students and parents can establish their own account
- Students must register at the beginning of each school year
- In order for students/parents to register, you will need the following information:
 - e-mail address
 - student's birth date and social security number

Parent Access to myStudent



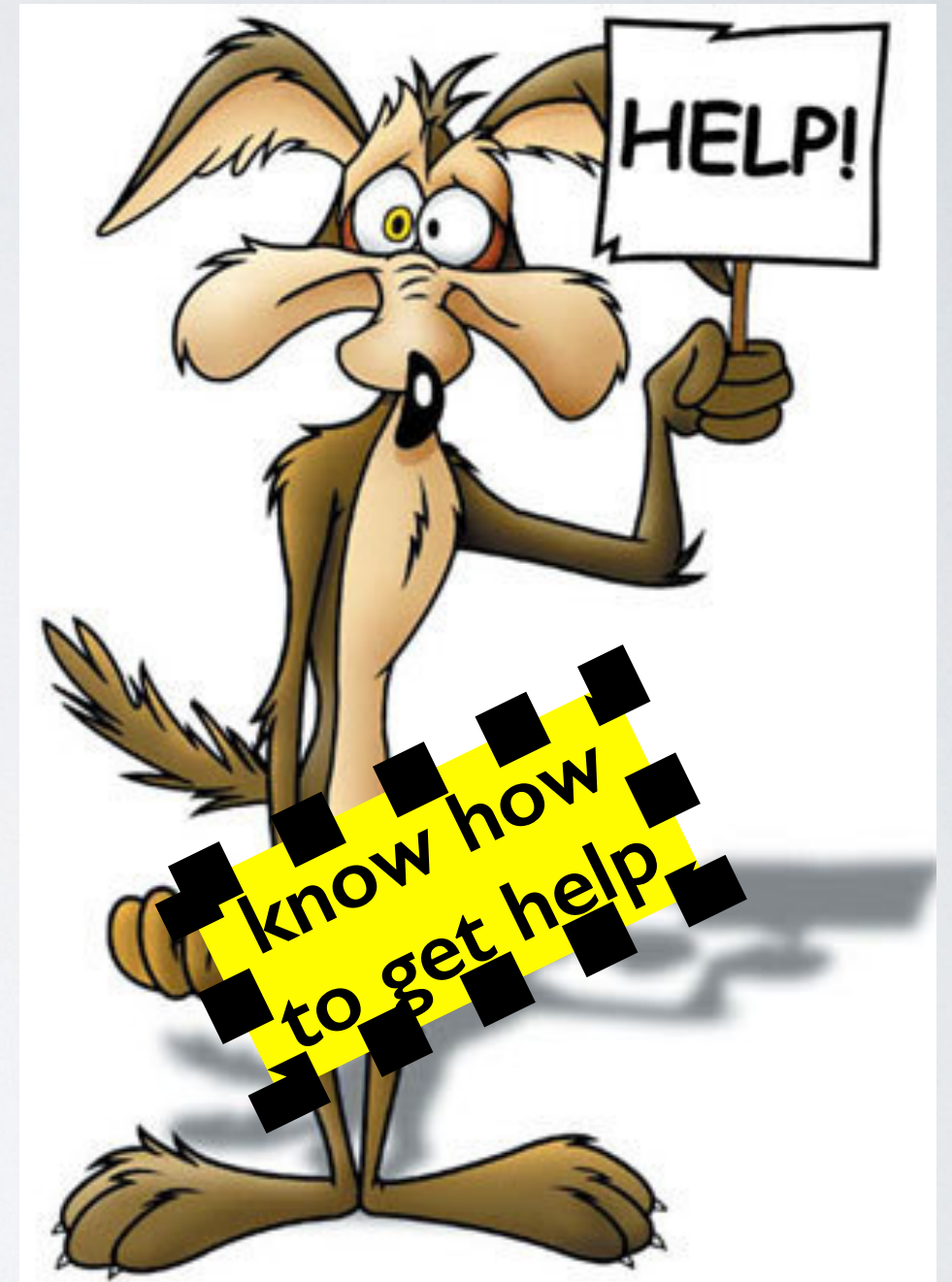
Parents, please use [this link](#) to create an account or log into myStudent to check grades and attendance.

All parents should have an existing account that was utilized during virtual registration.

WANT SOME ACADEMIC HELP?

- Teacher
- Counselor
- Administrator
- SSAP
- A.I.R. Time!!!!!!!

**We can help you get on
the right track if you are
failing a class...just ask!**



H EALTH & WELLNESS POLICIES FOR THE 21-22 SCHOOL YEAR

In order to maintain the health and wellness of our students, staff, and community as a whole, we will be implementing the following policies for the 21-22 school year.

- Encouraging Mask wearing (as needed)
- Social Distancing (when possible)
- Applying Proper Hygiene Practices

MASK WEARING

Mask wearing is OPTIONAL for this school year while students are on campus and/or when riding on the school bus.

Students who are not vaccinated, have personal health concerns and/or have family members who are not vaccinated or also have health concerns are ENCOURAGED to wear a mask while inside the building.

SOCIAL DISTANCING

We will be implementing “Social Distancing” policies to the greatest extent possible.

- Before/After School
- During Passing Periods
- During Lunch

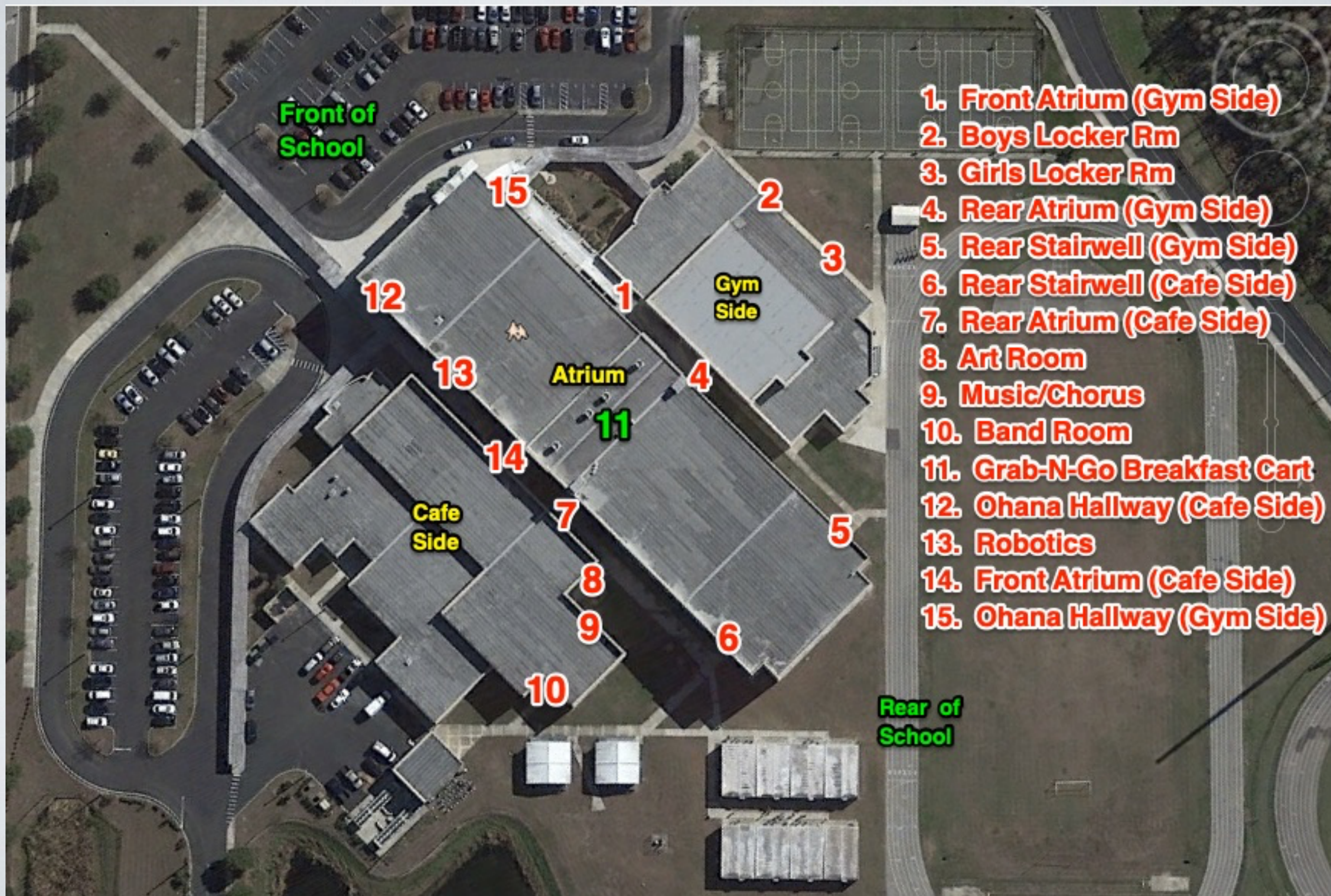
SOCIAL DISTANCING – ENTRY POINTS

Prior to the first day of school, August 10th, entry points will be posted on the Rushe website for all 1st period classes:

Please use your child's schedule to identify the teacher that your child has for 1st period and use the entry point chart to identify the appropriate entry point for your student.

Signs will be posted at each entry point and a staff member will be present to guide students and check schedules to make sure that students are using the correct entry point.

CSRMS Entry/Exit Points 21-22



SOCIAL DISTANCING – BEFORE SCHOOL

- ALL Students will enter the building through their assigned entry point at 7:10 AM or as soon as they arrive on campus (if after 7:10 AM).
- We ask that parents drop-off students in the car loop CLOSEST to their student's assigned entry point and that drop-off occurs between 7:10 A.M. and 7:20 A.M.
- Students who ride a school bus will immediately exit their bus when it arrives at CSRMS and will wait at their designated entry point until 7:10 A.M.
- Students are REQUIRED to use their assigned entry point and to remain socially distanced as they wait to enter the school building prior to 7:10 AM.
- The entry point is determined by the location of each student's 1st period class AND not by how students arrive on campus!! Signs will be posted at each entry point

SOCIAL DISTANCING – BEFORE SCHOOL

- At 7:10 A.M., the supervising staff member at each entry point will allow groups of students to enter the building depending on the floor of the students' first period class. The supervising staff members will remain at their assigned entry point until 7:25 A.M. Any students arriving after 7:25 A.M. should report to the front office entrance.
- When students arrive they will be required to go directly to their first period classroom and will NOT be allowed to mingle/socialize with other students in the Atrium or other common areas.
- Each classroom teacher will allow students to enter their classroom immediately and will supervise the students until the start of class at 7:25 A.M.

SOCIAL DISTANCING – GRAB N GO BREAKFAST

- **“Grab N Go Breakfast” will be available for pick-up between 7:10 A.M. and 7:20 A.M. in the Atrium at our “Grab N Go Breakfast” carts.**
- **For the 21-22 school year, ALL students will receive a FREE breakfast**
- **Students will not eat breakfast in the Atrium;** rather, students will take their breakfast with them and will immediately report to their first period classroom and will eat their breakfast in their classroom.
- **Students NOT eating breakfast should not be in the Atrium** and are **REQUIRED** to use the entry point assigned to their first period class.

SOCIAL DISTANCING – DURING SCHOOL

- Students who are not members of the same household should NOT share writing utensils, eating utensils, drinks, snacks, or food in such a way that could lead to an increased risk of exposure to COVID-19.
- Students who are not members of the same household are to avoid public displays of affection such as hugging, kissing, and otherwise being in close proximity that is not consistent with social distancing.

SOCIAL DISTANCING - DURING LUNCH

- We will use our Cafeteria for lunches, and we will space students out within those locations to the greatest extent possible.
- Students will be assigned to specific lunches by class period and the **expectation is that students will sit in an assigned seat during lunch.** Students will be given an opportunity at the beginning of the year to select their lunch seat and then will be expected to use that seat for the remainder of the school year. **If a student needs to change their seat, they must speak with the Cafeteria Monitor to receive permission to make the change.** Lunch seating changes will be **extremely limited!**

SOCIAL DISTANCING - DURING LUNCH

- Once seated, each row of tables will be called to enter the cafeteria lines and students will be **REQUIRED** to social distance while waiting to get their food. Students who bring their own lunch will remain seated when their row of tables is called to enter the lunch line.
- Students will remain seated throughout the lunch period and will need to get permission by raising their hand to use the restroom or to use the vending machines.
- The number of students using the restroom at any given time during lunch will be restricted.

SOCIAL DISTANCING - DURING LUNCH

- **Lunch waste will be picked-up during lunch by school staff who will be circulating with waste bins towards the end of the lunch period.** Please encourage your student to be responsible and to help us by not making unnecessary messes during lunch.
- **Students will be dismissed from lunch by rows, and we will stagger the dismissal of each row to create the greatest amount of social distancing possible.**

SOCIALLY DISTANCING – AT THE END OF THE DAY

- **The Front Office will announce student dismissal by floor**
- **ALL students will be assigned a specific exit location** and we will utilize as many exit points as possible.
- Students will exit the building through the stairwell and/or doors located nearest to their 6th period class. **6th period teachers will orient their students to the proper exit location and will walk their students as a class to the exit location.**
- **We ask that students leave campus as soon as possible and do not congregate/loiter with other students once the school day has ended.**

APPLYING PROPER HYGIENE PRACTICES

- **ALL** individuals should wash their hands often with soap and water for at least 20 seconds or use hand sanitizer, which has been placed throughout the school building. Sanitizing dispensers have been placed at entrances to the building, entry to hallways, and will also be available in each classroom.
- Teachers will remind/encourage students to utilize the hand sanitizer located in the classroom and students are welcome to bring their own hand sanitizer to school.
- **This is a critical component to helping stop the spread of CORONAVIRUS!!**

APPLYING PROPER HYGIENE PRACTICES

- Persons who are exhibiting symptoms such as an elevated temperature, fever, coughing, sneezing, or flu-like symptoms are **NOT** permitted on School Board-owned property or at school-sponsored events. **Students who exhibit such symptoms are to be immediately removed from the brick and mortar educational environment or any other school-sponsored activity.**
- Rushe has implemented an “**Isolation Suite**” to keep potentially sick students isolated from other students until parents are able to pick them up from school.



APPLYING PROPER HYGIENE PRACTICES

- **Teachers will disinfect/sanitize tables/desks at the start of their planning period, during lunch, and at the end of the school day with a disinfectant cleaner – SPARTAN HD NEUTRAL**
- ***A cleaning schedule will be implemented for high contact areas (bathrooms, door handles, railings, etc.) and our custodial team will disinfect these areas several times throughout the day.***
- **Each evening, our custodial team will wipe down **ALL** floors with a germicidal soap, disinfect all classrooms, sanitize entry door handles, and sanitize all high contact areas with a disinfectant cleaner.**

WALKERS

- Walkers who need to cross Mentmore Blvd. must cross at the crosswalk by the light.
- If walking west (toward the clubhouse) you must use the walkway that runs in front of the cafeteria and winds around to Mentmore.



BIKE RIDERS

- Bike Riders must lock their bikes inside the bike rack. You can also register your bike by downloading the Bike Registration form from our web site.
- State law requires all bike riders under the age of 16 to wear a helmet.
- For your safety, please walk bikes on/off campus - no riding on campus.



Electronics Policy



These rules are specific to common areas such as cafeteria, hallways, bathrooms, locker rooms, track, bus and car loop, etc.

Students are responsible for their own devices. Do not lend your phone or borrow a phone from another student.

All electronic devices should be kept on Silent Mode. Not complying with this rule will result in disciplinary action.

Students are allowed to use electronics in the hallways and cafeteria freely as long as they abide by the rules above.

Electronic privileges can be revoked if students do not respect the policies and procedures in place.

Electronics Policy - continued

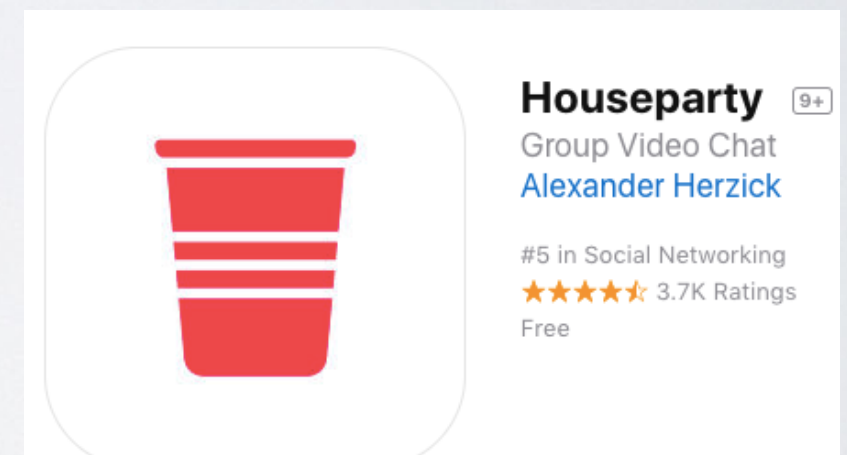
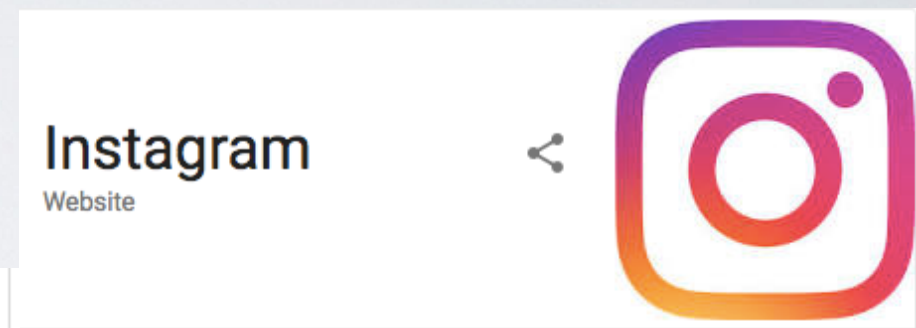
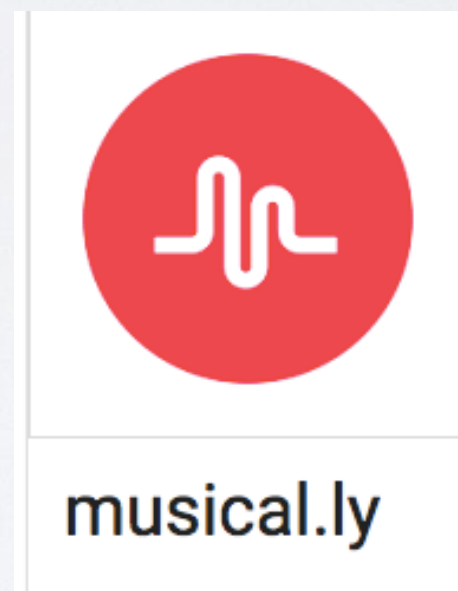
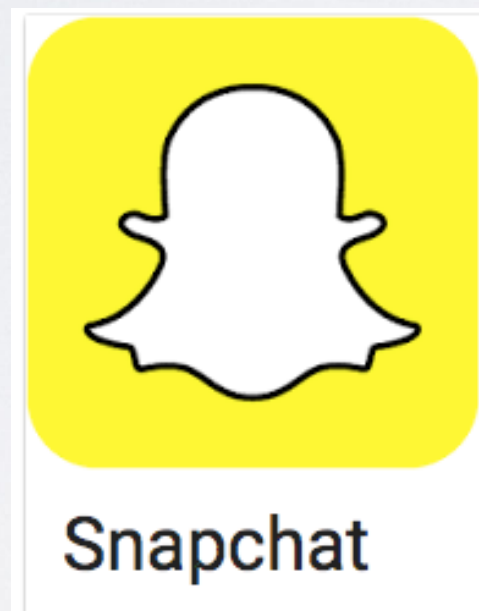
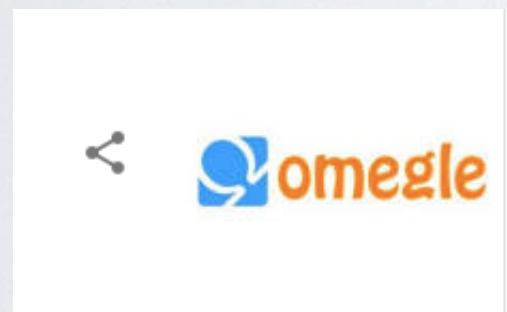
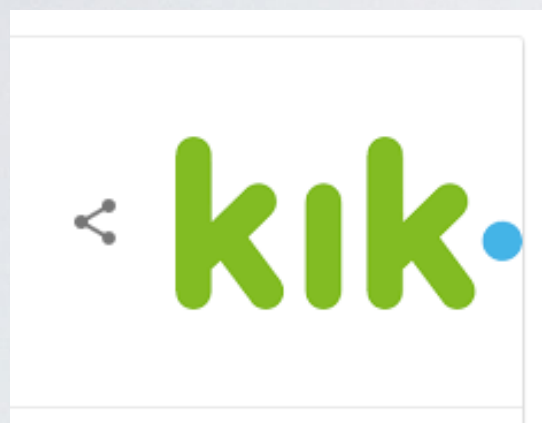
There is absolutely no use of electronics allowed in any restrooms or locker rooms. Electronics should be put away at all times.

Taking of pictures or videos is not allowed on campus unless authorized by your teacher for educational purposes.

Making phone calls is prohibited from the moment you come on campus to the moment you leave without explicit permission from a school staff member.

If you need to use a phone, go to the front office or get permission first!

Do you have ANY of the Following Apps on their phone?



Our Recommendation is that students NOT be allowed to download apps without parent permission and that parents should be the only ones with the password to the android/apple/google store! Please keep in mind, when deciding upon allowing your child access to these apps, that they can be distracting to your student during the school day.

Charles S. Rushe Middle School 2021-2022

BYOD Policy (Bring Your Own Device):

Rationale: We believe equitable access to technology will aid our students in becoming responsible, productive citizens, and lifelong learners. Today's students use technology to learn. Technology is essential to facilitate the problem solving, information fluency, and collaboration that we see in today's society. We want our students to be purposeful, digital contributors in our community; we also want them to be safe and responsible when using technology. Our BYOD policy supports our vision of technology use and digital citizenship.

Policy: Students may bring their personal electronic devices to school in order to enhance learning and demonstrate the ethical use of technology. Devices include Smartphones, Tablets, Laptops, iPods, Earbuds/headphones, Bluetooth speakers or any other sound projection device, eReaders, and other similar devices. The school is not responsible for lost, stolen, or damaged equipment. Devices must always be using the school's WiFi network to prevent data plan overuse as well as to restrict access to inappropriate websites. **Students will adhere to the following school-wide guidelines.**

School Wide Guidelines for Electronic Device Use:

Allowed

- Classroom use for teacher directed instructional activities.

Not Allowed

- Disrupting the educational environment
- Recording, taking video or photos without teacher authorization. i.e. Classroom project.
- Personal texting during instructional time
- Wearing earbuds/headphones during school hours with the exception of the first 25 minutes of lunch and after exiting the building at dismissal.
- Playing music through a sound projection device, Bluetooth or other, while on school grounds.

Students are responsible for...

1. Keeping their equipment safe and secure. The school is not responsible for lost, damaged, or stolen equipment. Please note that instructional time will not be used to investigate lost/stolen equipment.
2. Appropriate Usage.
3. **Responding to adult direction at all times (putting away device when directed, etc.)**
4. Knowing and adhering to school-wide guidelines.
5. Knowing and adhering to the network use policy found in the student planner.
6. Keeping the ownership documentation, including serial number, at home.
7. Knowing how to use their device to enhance learning.
8. Becoming an expert on their own device.

Parents: Please help us protect instructional time by communicating with your child electronically (text, voicemail, email, or phone call) only before/after school, during passing periods, and during your child's lunch. If there is an emergency and you need to contact your student, please contact the front office at (813) 346-1200 so that we can provide assistance

Student Supplies

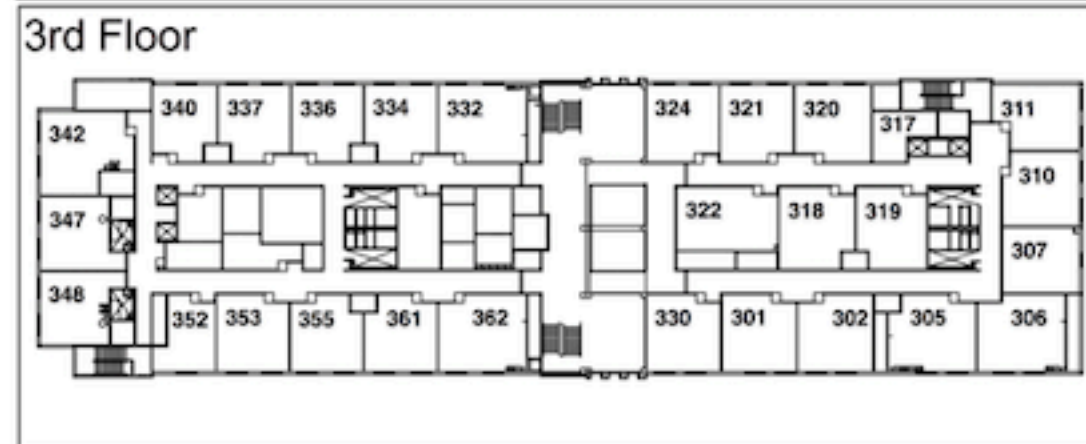
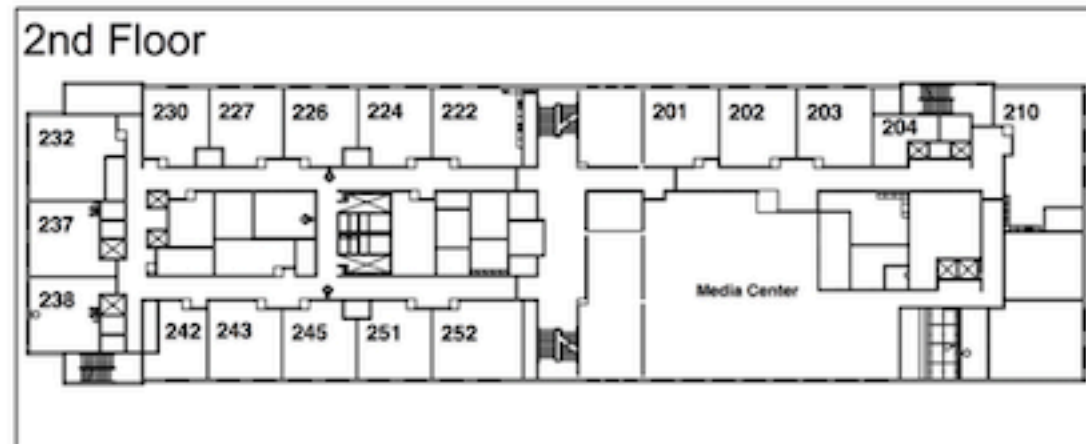
Please remember that we don't have lockers for the students. *Students will carry all their supplies, books, and belongings all day to each of their classes.* Therefore, always consider trying to buy the lightest and least bulky products to save space and weight in your child's backpack.

As well, please always make sure to provide your student with basic materials such as:

- Pens/Pencils
- Paper
- Folders
- Binders/Notebooks



Student Schedules



The **1st floor** is the location for the **6th grade teams**. There are other classes stationed outside in the portables as well. (Research/Health)

The **2nd floor** is primarily **7th grade teams**, including reading and some elective/CCTE classes.

The **3rd floor** is primarily **8th grade teams**, including some CCTE/Elective/Foreign Language classes.

AIR Time (All In Ravens)

Study Hall/Intervention Time:

CSRMS Daily Bell Schedule 2021-2022

1 st Period	7:25-8:19
Study/Intervention (AIR) Time	8:22-8:52
2 nd Period	8:55-9:45

A		B		C		D	
Lunch	9:48-10:18	3	9:48-10:38	3	9:54-10:47	3	9:54-10:47
3	10:21-11:11	Lunch	10:41-11:11	4	10:50-11:43	4	10:50-11:43
4	11:14-12:04	4	11:14-12:04	Lunch	11:46-12:16	5	11:46-12:39
5	12:07-12:57	5	12:07-12:57	5	12:19-1:12	Lunch	12:42-1:12

6 th Period	1:00-1:52
------------------------	-----------

NO Excuses for Missing Work!

Each day, students are provided with a 30 min. time period in which they can get academic support.

Students will be scheduled with one of their team teachers (LA, MA, Sci, SS, or Elective Teacher assigned to their team) and are allowed to complete assignments and ask for assistance on misunderstood concepts. Students will rotate from one subject area teacher to another each day during the week.

*** Your team of teachers will ensure you know where to go each day.**

Student Activities (Subject to change)

6th Grade students can participate in the following sports:
Football, Volleyball (Girls), Basketball (Boys/Girls), Soccer (Boys/Girls),
Track (Boys/Girls), Cheer (Boys/Girls)

Students Working Against Tobacco (SWAT)/

Fellowship of Christian Students (FCS)

National Junior Honor Society

Student Council

Builders Club

Thespian Club

Odyssey of the Mind

Chess Club

Color Guard Club

Travel Club

Book Club





Supervision

School Hours officially **begin at 7:25 a.m. and ends at 1:52 p.m.** There is a warning bell that rings 15 minutes prior to the beginning of the school day.

Students are *not allowed* in the building until 7:10 AM and **MUST** report directly to their 1st period class.

Students *must not be on campus* more than 30 minutes after school (2:32 p.m.) without permission from a staff member.



CSRMS Dress Code 21-22

General Guidelines:

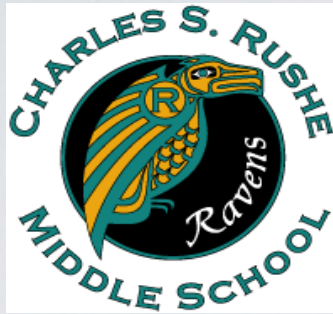
- Clothing must cover the body from one armpit across to the other armpit and down to approximately midhigh.
- Tops must have straps at least 1" across. Undergarments must not be viewable.
- Tops must be long enough to clearly overlap the belt line or stay tucked in during the course of normal movement throughout the school day.

Inappropriate Dress Code items:

The following types of clothing, items, accessories and apparel are considered inappropriate for the school environment. Students that wear the same may be subject to discipline in accordance to the Student Code of Conduct.

<ul style="list-style-type: none">• Jeans or pants with rips or holes that expose undergarments, areas of the body that would generally be covered by undergarments or body parts in an indecent or vulgar manner• Wallet chains, dog collars or similar items• Slippers or similar footwear• Pajamas or costumes (unless approved by school administration for special events, spirit week, etc.)• Leggings, yoga pants, spandex, tights or similar clothing (unless covered by a shirt down to mid-thigh)• Jewelry that may cause safety issues and/or substantially disrupt the school setting• Hats, bandanas or head coverings (unless preapproved administratively for medical, religious reasons and/or for special school activities)	<p>Any clothing, items, accessories or apparel which may or does:</p> <ul style="list-style-type: none">• Substantially disrupt the school setting• Be offensive to good taste or the maintenance of decorum• Expose underwear, body parts in an indecent or vulgar manner and/or abdomen skin <p>Any clothing, items, accessories or apparel which contain or display:</p> <ul style="list-style-type: none">• Profanity in any form• Violent images• Vulgarity in any form• Sexually suggestive words, phrases or images• Sexually implicit or explicit images• Advertisements or usage of tobacco, alcohol or drugs
---	---

Students are not allowed to attend class when not in compliance with the Dress Code. Students will be asked to comply with one of the following options if they are in violation of the Dress Code – 1) change clothes 2) call home for a change of clothes 3) go to ISS until appropriate clothing is available.



Examples of Unacceptable and Acceptable Attire at CSRMS*

No slides
No flip flops
No slippers

You cannot wear any shoes that may slip off your feet causing a safety hazard on stairs. Footwear must have a backing/strap that secures the shoe to the foot.

Unacceptable



Acceptable



No low-cut tops
No offensive logos
No spaghetti straps
No short shirts showing abdomen

Unacceptable



Acceptable



No sagging pants (Pants must be secured at the waist)
No leggings (except with appropriate length shirt that covers the buttocks)
No pajama pants or costumes
No yoga pants, spandex, tights, or similar clothing
No hip chains.
No rips that expose undergarments or that expose areas of the body generally covered by undergarments

Unacceptable



Acceptable



No hats, bandanas, hoodies, or head coverings

Unacceptable



Acceptable



* Please review *Rules for Dress and Appearance* (pages 14 and 15) in the Secondary Student Code of Conduct for more details.

CSRMS is a Bully-Free School

Bullying is repeated unwanted, aggressive behavior among school aged children that involves a real or perceived power imbalance.

If bullied, the following steps will be taken:

- Student reports to adult at school.

- School investigates (speak with students).

- Staff Documents to track patterns of behavior.

- Staff Implements appropriate intervention.



If continues:

- Contact parents -Involve Corporal and various staff support services

- No Contact Agreement is established

If still continues:

- Review patterns of behavior, contact both parents

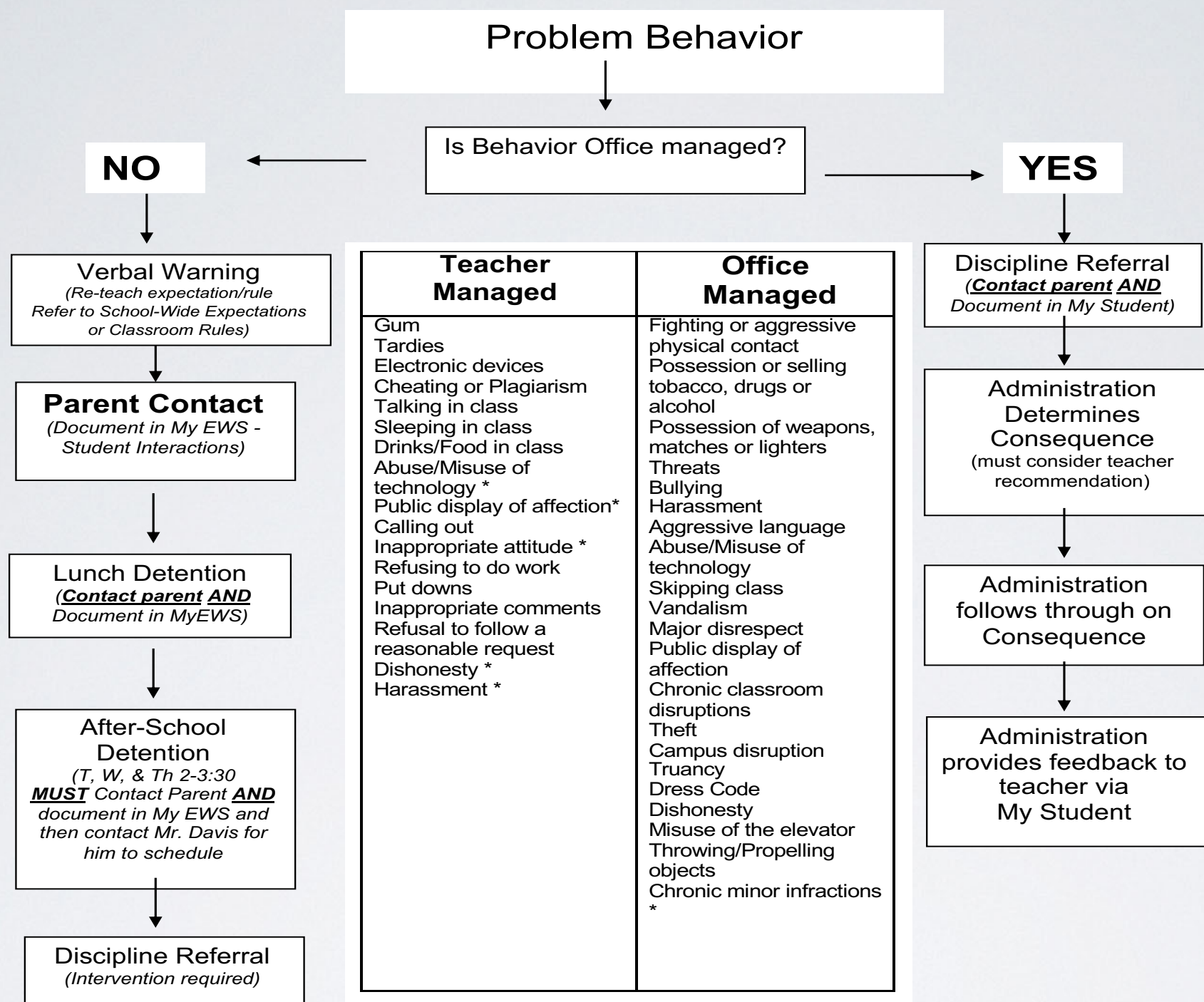
- Involve Corporal and various staff support services

- More serious consequences are given to terminate this behavior

The most important rule of thumb is: If we don't know, we cant help!

Don't be afraid to end bullying, tell an adult anytime you or someone you know is dealing with this situation and you can help stop bullying!

Disciplinary Flowchart - 21-22



Side Bar on Teacher Managed Behavior:

- ☐ Complete concrete intervention to correct behavior: student conference, referral to guidance, reflection, team conference, re-teach expectation, problem solving activity, etc.
- ☐ Document classroom managed interventions into My EWS

YOUR MISSION

Create personal goals
for health, academics,
and behavior – IT'LL
BE A

GREAT YEAR!



...For Every Minute
...Of Every Class
...Of Every Day
...No Matter How Challenging My Task
.....I Am ALL-In!!
...I am ready to SOAR!!!

And only YOU can make it happen! YOU
are a Raven, and Ravens Soar to Success!!

WE ARE ALL IN THIS
TOGETHER



You are now a Raven, and Ravens

Soar to Success!!